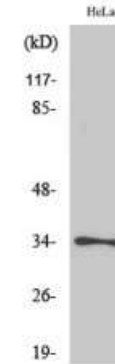


## Phospho-Cdc2 (Thr161) Antibody

<b>CATALOG NO:</b>	A1255-100 100 µl
<b>ALTERNATE NAMES:</b>	Cyclin-dependent kinase 1, CDK1, Cell division control protein 2 homolog, Cell division protein kinase 1, p34 protein kinase, CDK1, CDC2, CDC28A, CDKN1, P34CDC2
<b>AMOUNT:</b>	100 µl
<b>IMMUNOGEN:</b>	Synthesized peptide derived from human Cdc2 around the phosphorylation site of T161. AA: 100-180
<b>MOL. WEIGHT</b>	34 kDa
<b>HOST/ISOTYPE:</b>	Rabbit IgG
<b>SPECIES REACTIVITY:</b>	Human, Mouse, Rat
<b>SPECIFICITY:</b>	Phospho-Cdc2 (T161) Polyclonal Antibody detects endogenous levels of Cdc2 protein only when phosphorylated at T161.
<b>PURIFICATION:</b>	The antibody was affinity-purified from rabbit serum by affinity-chromatography using specific immunogen.
<b>FORM:</b>	Liquid
<b>FORMULATION:</b>	PBS containing 50% glycerol, 0.5% BSA and 0.02% sodium azide
<b>STORAGE CONDITIONS:</b>	Store at -20°C. Avoid repeated freeze/thaw cycles.
<b>DESCRIPTION:</b>	Plays a key role in the control of the eukaryotic cell cycle by modulating the centrosome cycle as well as mitotic onset; promotes G2-M transition, and regulates G1 progress and G1-S transition via association with multiple interphase cyclins. Required in higher cells for entry into S-phase and mitosis.
<b>APPLICATION:</b>	WB 1:500-1:2000; IHC 1:100-1:300; ELISA 1:5000  <b>Note: This information is only intended as a guide. The optimal dilutions must be determined by the user.</b>



**Western Blot (WB) analysis of HeLa cells using Phospho-Cdc2 (T161) Polyclonal Antibody**

### RELATED PRODUCTS:

- Phospho Alpha-synuclein (Tyr125) Antibody (**Cat. No. A1219-100**)
- Phospho (Ser31) Tyrosine Hydroxylase Antibody (**Cat. No. 3613-200**)
- Phospho (Ser19) Tyrosine Hydroxylase Antibody (**Cat. No. 3612-100**)
- Phospho (Tyr1472) NMDA NR2B Antibody (**Cat. No. 3616-100**)
- Phospho CREB (Ser129) Antibody (**Cat. No. A1222-100**)
- Phospho GAP43 (Ser41) Antibody (**Cat. No. A1220-100**)
- Phospho-Akt2 (Ser474) Antibody (**Cat. No. A1246-100**)
- Phospho-Akt1 (Ser246) Antibody (**Cat. No. A1245-100**)
- Phospho-MNK1 (Thr250) Antibody (**Cat. No. A1159-50**)
- Phospho-NIFK (Thr234) Antibody (**Cat. No. A1157-50**)

**FOR RESEARCH USE ONLY! Not to be used on humans.**