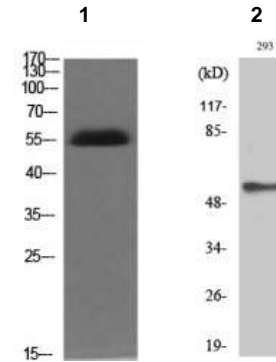


Phospho-Akt2 (Ser474) Antibody

CATALOG NO:	A1246-100 100 µl
ALTERNATE NAMES:	AKT2; RAC-beta serine/threonine-protein kinase; Protein kinase Akt-2; Protein kinase B beta; PKB beta; RAC-PK-beta
AMOUNT:	100 µl (1 mg/ml)
IMMUNOGEN:	Synthesized peptide derived from human Akt2 around the phosphorylation site of S474
MOL. WEIGHT	60 kDa
HOST/ISOTYPE:	Rabbit IgG
SPECIES REACTIVITY:	Human, mouse, rat
SPECIFICITY:	Phospho-Akt2 (S474) Polyclonal Antibody detects endogenous levels of Akt2 protein only when phosphorylated at S474.
PURIFICATION:	The antibody was affinity-purified from rabbit antiserum by affinity-chromatography using epitope-specific immunogen
FORM:	Liquid
FORMULATION:	Liquid in PBS containing 50% glycerol, 0.5% BSA and 0.02% sodium azide
STORAGE CONDITIONS:	Store at -20°C. Avoid repeated freeze/thaw cycles.
DESCRIPTION:	AKT2 is a putative oncogenic protein belonging to a subfamily of serine/threonine kinases containing SH2-like (Src homology 2-like) domains. Furthermore, AKT2 was shown to be amplified and overexpressed in 2 of 8 ovarian carcinoma cell lines and 2 of 15 primary ovarian tumors. Overexpression of AKT2 contributes to the malignant phenotype of a subset of human ductal pancreatic cancers. AKT2 is a general protein kinase capable of phosphorylating several known proteins.
APPLICATION:	WB 1:500-1:2000; IHC 1:100-1:300; ELISA 1:20000

Note: This information is only intended as a guide. The optimal dilutions must be determined by the user.



Western Blot analysis using Phospho-Akt2 (Ser474) Antibody in (1) Mouse brain (2) 293 cell lysate

RELATED PRODUCTS:

- Akt2 Antibody (Cat. No. 3155-100)
- Akt2, Active (Cat. No. 7702-100)

FOR RESEARCH USE ONLY! Not to be used on humans.