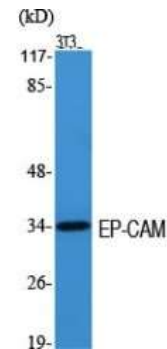


Anti-EP-CAM Antibody

CATALOG NO:	A1243-100 100 µl
ALTERNATE NAMES:	CD326, EPCAM; GA733-2; M1S2; M4S1; MIC18; TACSTD1; TROP1; Epithelial cell adhesion molecule; Ep-CAM; Adenocarcinoma-associated antigen; Cell surface glycoprotein Trop-1; Epithelial cell surface antigen; Epithelial glycoprotein; EGP; Epithelial gly
AMOUNT:	100 µl (1 mg/ml)
IMMUNOGEN:	Synthesized peptide derived from the Internal region of human EP-CAM at AA range: 90-170.
MOL. WEIGHT	35 kDa
HOST/ISOTYPE:	Rabbit IgG
SPECIES REACTIVITY:	Human
SPECIFICITY:	EP-CAM Polyclonal Antibody detects endogenous levels of EP-CAM protein.
PURIFICATION:	The antibody was affinity-purified from rabbit antiserum by affinity-chromatography using epitope-specific immunogen
FORM:	Liquid
FORMULATION:	Liquid in PBS containing 50% glycerol, 0.5% BSA and 0.02% sodium azide
STORAGE CONDITIONS:	Store at -20°C. Avoid repeated freeze/thaw cycles.
DESCRIPTION:	May act as a physical homophilic interaction molecule between intestinal epithelial cells (IECs) and intraepithelial lymphocytes (IELs) at the mucosal epithelium for providing immunological barrier as a first line of defense against mucosal infection. Plays a role in embryonic stem cells proliferation and differentiation. Up-regulates the expression of FABP5, MYC and cyclins A and E
APPLICATION:	WB 1:500-1:2000; ELISA 1:5000-1:20000; IHC 1:100-1:300

Note: This information is only intended as a guide. The optimal dilutions must be determined by the user.



Western Blot (WB) analysis of 3T3 cells using EP-CAM Polyclonal Antibody.

RELATED PRODUCTS:

- RIP Antibody (Cat. No. 3279-100)
- RIP3 Antibody (Cat. No. 3293-100)
- Raf1 Antibody (Cat. No. 3116-100)
- Adenosine Antibody (Cat. No. 6652--100)
- EDG4 Antibody (N-term) (Cat. No. A1056-100)
- BAR2 Antibody (S261) (Cat. No. A1057-100)
- SMO Antibody (Center) (Cat. No. A1058-100)
- 5-Hydroxytryptamine Receptor 1A Antibody (Cat. No. A1059-100)
- AGTR2 Polyclonal Antibody (Cat. No. A1063-50)
- CRTH2 Polyclonal Antibody (Cat. No. A1064-50)

FOR RESEARCH USE ONLY! Not to be used on humans.