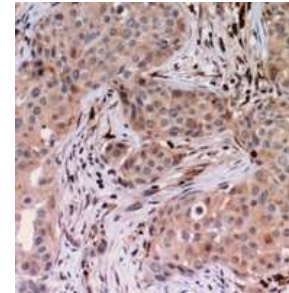


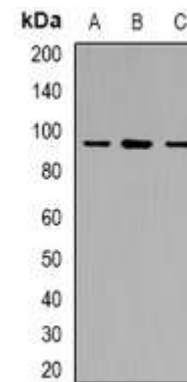
Anti-USP6NL Antibody

CATALOG NO:	A1191-100
ALTERNATIVE NAMES:	KIAA0019, USP6 N-terminal-like protein, Related to the N-terminus of tre, RN-tre
AMOUNT:	100 µl
IMMUNOGEN:	KLH-conjugated synthetic peptide encompassing a sequence within the center region of human USP6NL
HOST/ISOTYPE:	Rabbit IgG
CLONALITY:	Polyclonal
SPECIFICITY:	Recognizes endogenous levels of USP6NL protein
SPECIES REACTIVITY:	Human, Mouse and Rat
PURIFICATION:	The antibody was purified by affinity chromatography
FORM:	Liquid
FORMULATION:	Supplied in 0.42% Potassium phosphate; 0.87% Sodium chloride; pH 7.3; 30% glycerol and 0.01% sodium azide
STORAGE CONDITIONS:	Shipped at 4°C. For long term storage store at -20°C in small aliquots to prevent freeze-thaw cycles
DESCRIPTION:	USP6 N-terminal-like protein acts as a GTPase-activating protein for RAB5A and RAB43. Involved in receptor trafficking. In complex with EPS8 inhibits internalization of EGFR. Involved in retrograde transport from the endocytic pathway to the Golgi apparatus. It is also involved in the transport of Shiga toxin from early and recycling endosomes to the trans-Golgi network. Required for structural integrity of the Golgi complex
APPLICATION:	WB; 1:500 – 1:2000, IHC; 1:50 – 1:200

Note: This information is only intended as a guide. The optimal dilutions must be determined by the user.



Immunohistochemical analysis of USP6NL staining in human breast cancer formalin fixed paraffin embedded tissue section.



Western blot analysis of USP6NL expression in Jurkat (A); RAW264.7 (B); PC12 (C) whole cell lysates.

RELATED PRODUCTS:

- USP2 Polyclonal Antibody (Cat. No. 6141-100)
- USP3 Polyclonal Antibody (Cat. No. 6142-100)
- USP25 Polyclonal Antibody (Cat. No. 6143-100)
- USP4 Polyclonal Antibody (Cat. No. 6131-50)
- USP5 Polyclonal Antibody (Cat. No. 6132-50)
- USP7 Polyclonal Antibody (Cat. No. 3747-100)
- USP8 Polyclonal Antibody (Cat. No. 6133-50)
- USP14 Polyclonal Antibody (Cat. No. 6134-50)
- USP15 Polyclonal Antibody (Cat. No. 6135-50)

FOR RESEARCH USE ONLY! Not to be used on humans.