

Phospho-PKC ζ (Thr 410) Antibody

CATALOG NO:	A1130-100	100 μ l
ALTERNATE NAMES:	PRKCZ; PKC2; Protein kinase C zeta type; nPKC-zeta	
AMOUNT:	100 μ l (1 mg/ml)	
IMMUNOGEN:	Synthesized peptide derived from human PKC ζ around the phosphorylation site of Thr 410.	
IMMUNOGEN REGION:	350-430aa	
HOST/ISOTYPE:	Rabbit IgG	
SPECIES REACTIVITY:	Human, Mouse, Rat	
PURIFICATION:	The antibody was affinity-purified from rabbit antiserum by affinity-chromatography using epitope specific immunogen.	
MOL. WEIGHT	70 kDa	
SPECIFICITY:	Phospho-PKC ζ (T410) Polyclonal Antibody detects endogenous levels of PKC ζ protein only when phosphorylated at T410.	
FORM:	Liquid	
FORMULATION:	Liquid in PBS containing 50% glycerol, 0.5% BSA and 0.02% sodium azide	
STORAGE CONDITIONS:	Store at 4°C. For long term storage, aliquot and freeze at -20°C. Avoid repeated freeze/thaw cycles.	
DESCRIPTION:	Calcium- and diacylglycerol-independent serine/threonine-protein kinase that functions in phosphatidylinositol 3-kinase (PI3K) pathway and mitogen-activated protein (MAP) kinase cascade, and is involved in NF-kappa-B activation, mitogenic signaling, cell proliferation, cell polarity, inflammatory response and maintenance of long-term potentiation (LTP). Upon lipopolysaccharide (LPS) treatment in macrophages, or following mitogenic stimuli, functions downstream of PI3K to activate MAP2K1/MEK1-MAPK1/ERK2 signaling cascade independently of RAF1 activation. Required for insulin-dependent activation of AKT3, but may function as an adapter rather than a direct activator. Upon insulin treatment may act as a downstream effector of PI3K and contribute to the activation of translocation of the glucose transporter SLC2A4/GLUT4 and subsequent glucose transport in adipocytes.	
APPLICATION:	WB 1:500-1:2000; IHC 1:100-1:300; IF 1:200-1:1000; ELISA 1:20000	

Note: This information is only intended as a guide. The optimal dilutions must be determined by the user.

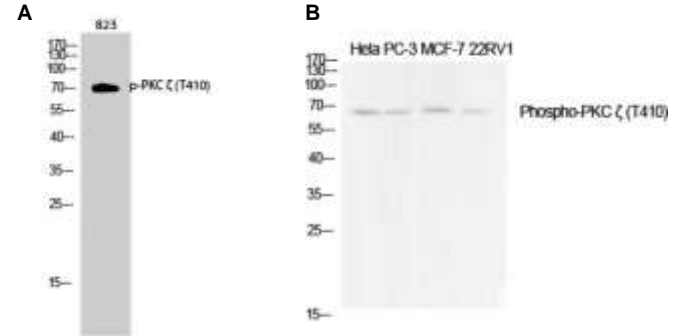


Fig A: Western Blot of 823 cell lysates using Phospho-PKC ζ (Thr410) antibody

Fig B: Western blot analysis using using Phospho-PKC ζ (Thr410) antibody in:

Lane 1: HeLa cell lysate
 Lane 2: PC-3 cell lysate
 Lane 3: MCF-7 cell lysate
 Lane 4: 22RV1 cell lysate

RELATED PRODUCTS:

- Phospho-Bad Antibody (Cat. No. 3269-100)
- Bad Antibody (Cat. No. 3005-100)
- ABAD/HADH2 Antibody (Cat. No. 3246-100)
- Bim/Bod Antibody (Cat. No. 3124-100)
- ABAD/HADH2 Blocking Peptide (Cat. No. 3246BP-50)
- pGB BAD siRNA Vector Mix (Cat. No. 9512-60)

FOR RESEARCH USE ONLY! Not to be used on humans.