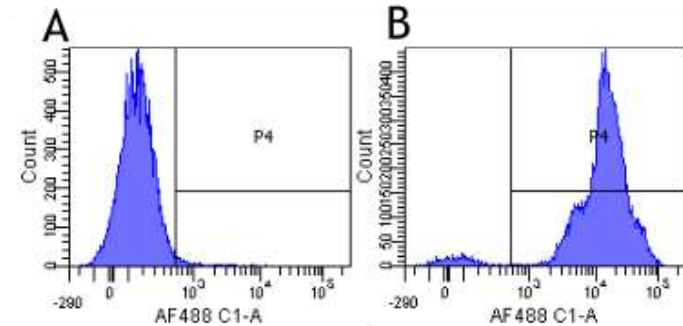


Anti-CD11a, Human IgG1 Antibody

CATALOG NO:	A1089-200
ALTERNATIVE NAMES:	LFA-1; integrin alpha L
AMOUNT:	200 µg
IMMUNOGEN:	Human CD11a
ISOTYPE /FORMAT:	Human IgG1, kappa
CLONALITY:	Monoclonal
CLONE:	hu1124
SPECIES REACTIVITY:	Human
FORM:	Liquid
PURIFICATION:	Affinity purified using Protein A
FORMULATION:	Supplied in PBS with preservative (0.02% Proclin 300)
STORAGE CONDITIONS:	Store at 4 °C for up to 3 months. For long term storage, aliquot and freeze at -20 °C. Avoid repeated freeze/defrost cycles.
DESCRIPTION:	Recombinant monoclonal antibody to CD11a. Manufactured using recombinant technology with variable regions (i.e. specificity) that recognizes human CD11a
BACKGROUND:	Integrin alpha-L/beta-2 is a receptor for ICAM1, ICAM2, ICAM3 and ICAM4. It is involved in a variety of immune phenomena including leukocyte-endothelial cell interaction, cytotoxic T-cell mediated killing, and antibody dependent killing by granulocytes and monocytes.
APPLICATION:	The biosimilar antibody binds to the LFA-1 alpha I domain blocking the ICAM-1 binding site via steric hindrance.
REFERENCE:	Bauer <i>et al.</i> Population pharmacokinetics and pharmacodynamics of the anti-CD11a antibody hu1124 in human subjects with psoriasis. J Pharmacokinet Biopharm. 1999 Aug; 27(4):397-420



Flow-cytometry using the anti-CD11a research biosimilar antibody: Human lymphocytes were stained with an isotype control or the rabbit-chimeric version of Anti-CD11a at a concentration of 1 µg/ml for 30 mins at RT. After washing, bound antibody was detected using AF488 conjugated donkey anti-rabbit antibody and analyzed on a FACSCanto flow-cytometer.

RELATED PRODUCTS:

- Anti-VEGF, humanized Antibody (Cat. No. A1045-100)
- Anti-HER2, humanized Antibody (Cat. No. A1046-100)
- Anti-EGFR, Chimeric Antibody (Cat. No. A1047-100)
- Anti-TNF-α, humanized Antibody (Cat. No. A1048-100)
- Anti-CD20, Chimeric Antibody (Cat. No. A1049-100)
- Anti-EGFR, humanized antibody (Cat. No. A1050-100)
- Anti-OX40L, Human IgG1 Antibody (Cat. No. A1088-200)
- Anti-EGFR, Human IgG1 Antibody (Cat. No. A1090-200)
- Anti-CD4, Human IgG4 Antibody (Cat. No. A1091-200)
- Anti-TNF alpha, Human IgG4 Antibody (Cat. No. A1093-200)
- Anti-CD40L, Human IgG1 Antibody (Cat. No. A1094-200)
- Anti-Human Ephrin Type A receptor 2 (1C1), Human IgG1 Antibody (Cat. No. A1095)
- Anti-TNF alpha, Human IgG1 Antibody (Cat. No. A1097-200)
- Anti-IL-2R alpha (CD25), Human IgG1 Antibody (Cat. No. A1098-200)
- Anti-IL-2R alpha, Human IgG1 Antibody (Cat. No. A1099-200)

FOR RESEARCH USE ONLY! Not to be used on humans.