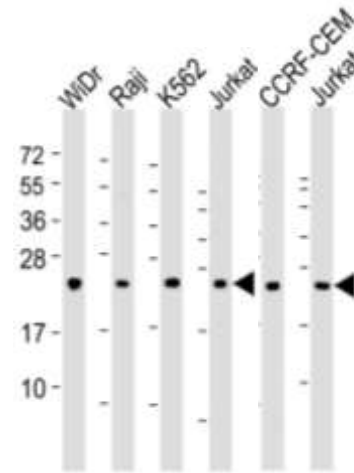


CTLA4 Polyclonal Antibody

CATALOG NO:	A1083-100
ALTERNATIVE NAMES:	Cytotoxic T-lymphocyte protein 4, Cytotoxic T-lymphocyte-associated antigen 4, CTLA-4, CD152, CTLA4, CD152
AMOUNT:	100 µl
IMMUNOGEN:	KLH conjugated synthetic peptide between 50-78 amino acids from the N-terminal region of human IDDM12.
MOLECULAR WEIGHT:	24 kDa
HOST/ISOTYPE:	Rabbit IgG
SPECIES REACTIVITY:	Human
PURIFICATION:	This antibody is purified through a protein A column, followed by peptide affinity purification.
FORM:	Liquid
FORMULATION:	Supplied in PBS with 0.09% (W/V) sodium azide.
STORAGE CONDITIONS:	Maintain refrigerated at 2-8°C for up to 6 months. For long term storage store at -20°C in small aliquots to prevent freeze-thaw cycles.
DESCRIPTION:	CTLA4 is a member of the immunoglobulin superfamily and encodes a protein which transmits an inhibitory signal to T cells. The protein contains a V domain, a transmembrane domain, and a cytoplasmic tail. Alternate transcriptional splice variants, encoding different isoforms, have been characterized. The membrane-bound isoform functions as a homodimer interconnected by a disulfide bond, while the soluble isoform functions as a monomer. Mutations in this gene have been associated with insulin-dependent diabetes mellitus, Graves disease, Hashimoto thyroiditis, celiac disease, systemic lupus erythematosus, thyroid-associated orbitopathy, and other autoimmune diseases.
APPLICATION:	WB: 1:2000 IHC-P: 1:50~100

Note: This information is only intended as a guide. The optimal dilutions must be determined by the user.



Western blot analysis of CTLA4 Antibody in:

Lane 1: WiDr cell line lysates
Lane 2: Raji cell lysates
Lane 3: K562 cell lysates
Lane 4: Jurkat cell lysates
Lane 5: CCRF-CEM cell lysates
Lane 6: Jurkat cell lysates

RELATED PRODUCTS

- CD223 (LAG3) Polyclonal Antibody (Cat. No. A1067-100)
- CD86 Polyclonal Antibody (Cat. No. A1068-100)
- Tim-3 Antibody (Cat. No. 3808-100)
- PD-1/PDCD1 Antibody (Cat. No. 6931-50)
- CD160 Polyclonal Antibody (Cat. No. A1072-100)
- Human CellExp™ CTLA4/CD152, human recombinant (Cat. No. 7476-20, -100)

FOR RESEARCH USE ONLY! Not to be used on humans.