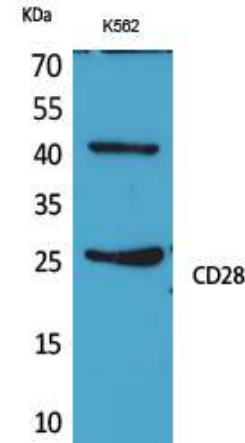


CD28 Polyclonal Antibody

CATALOG NO:	A1076-100
ALTERNATIVE NAMES:	CD28; T-cell-specific surface glycoprotein CD28; TP44
AMOUNT:	100 µg
IMMUNOGEN:	Synthesized peptide derived from the internal region of human CD28.
MOLECULAR WEIGHT:	25 kDa
HOST/ISOTYPE:	Rabbit IgG
SPECIES REACTIVITY:	Human
PURIFICATION:	This antibody is purified by affinity-chromatography using epitope-specific immunogen.
FORM:	Liquid
FORMULATION:	Supplied in PBS containing 50% glycerol, 0.5% BSA and 0.02% sodium azide.
STORAGE CONDITIONS:	For long term storage store at -20°C in small aliquots to prevent freeze-thaw cycles.
DESCRIPTION:	Involved in T-cell activation, induction of cell proliferation and cytokine production and promotion of T-cell survival. Enhances the production of IL4 and IL10 in T-cells in conjunction with TCR/CD3 ligation and CD40L costimulation. Isoform 3 enhances CD40L-mediated activation of NF-kappa-B and kinases MAPK8 and PAK2 in T-cells.
APPLICATION:	Western Blot: 1:500 – 1:2000 ELISA: 1:20000.

Note: This information is only intended as a guide. The optimal dilutions must be determined by the user.



Western Blot analysis of K562 cells using CD28 Polyclonal Antibody

RELATED PRODUCTS

- CD223 (LAG3) Polyclonal Antibody (Cat. No. A1067-100)
- CD86 Polyclonal Antibody (Cat. No. A1068-100)
- Tim-3 Antibody (Cat. No. 3808-100)
- PD-1/PDCD1 Antibody (Cat. No. 6931-50)
- CD160 Polyclonal Antibody (Cat. No. A1072-100)
- Human CellExp™ CD28, Human recombinant (Cat. No. 9237-10, -100)

FOR RESEARCH USE ONLY! Not to be used on humans.