

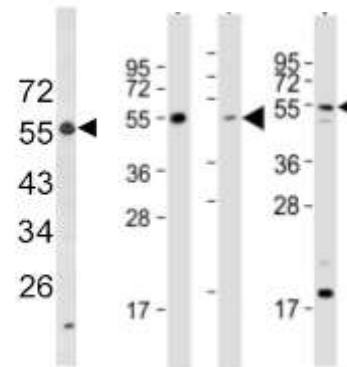
CD223 (LAG3) Polyclonal Antibody

CATALOG NO:	A1067-100
ALTERNATIVE NAMES:	Lymphocyte activation gene 3 protein, LAG-3, Protein FDC, CD223, LAG3, FDC
AMOUNT:	100 µl
IMMUNOGEN:	KLH conjugated synthetic peptide between 103-132 amino acids from the Central region of human LAG3.
MOLECULAR WEIGHT:	57.4 Da
HOST/ISOTYPE:	Rabbit IgG
SPECIES REACTIVITY:	Human, Mouse
PURIFICATION:	This antibody is purified through a protein A column, followed by peptide affinity purification.
FORM:	Liquid
FORMULATION:	Supplied in PBS with 0.09% (W/V) sodium azide.
STORAGE CONDITIONS:	Maintain refrigerated at 2-8°C for up to 6 months. For long term storage store at -20°C in small aliquots to prevent freeze-thaw cycles.
DESCRIPTION:	Lymphocyte-activation protein 3 belongs to Ig superfamily and contains 4 extracellular Ig-like domains. Involved in lymphocyte activation. Binds to HLA class-II antigens.
APPLICATION:	IHC-P: 1:10~50 FC: 1:25 WB: 1:1000

Note: This information is only intended as a guide. The optimal dilutions must be determined by the user.

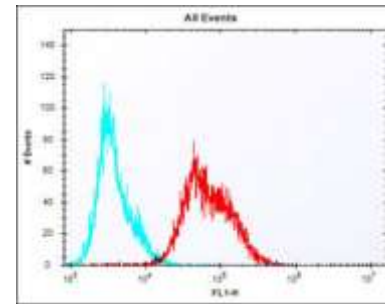


Immunohistochemistry (Formalin/PFA-fixed paraffin-embedded sections) – LAG 3 antibody



Western blot analysis of LAG3 Antibody in:

Lane 1: K562 cell line lysates
Lane 2: Human ovary lysate
Lane 3: Mouse liver lysate
Lane 4: A2058 whole cell lysate



Overlay histogram showing Jurkat cells stained with LAG 3 antibody (red line).

RELATED PRODUCTS

- Tim-3 Antibody (Cat. No. 3808-100)
- PD-1/PDCD1 Antibody (Cat. No. 6931-50)
- Human CellExp™LAG3 /CD223, human recombinant (Cat. No. 7278-10, -50)
- CD86 Polyclonal Antibody (Cat. No. A1067-100)

FOR RESEARCH USE ONLY! Not to be used on humans.