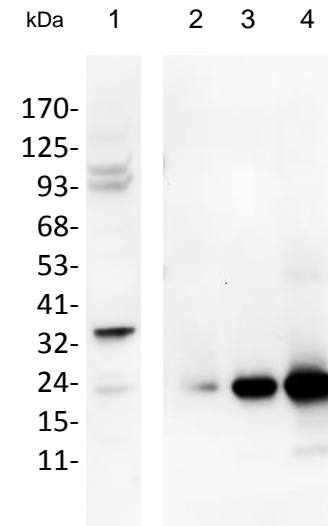


## SHH Polyclonal Antibody

<b>ALTERNATE NAMES:</b>	Sonic hedgehog protein, HHG-1, SHH
<b>CATALOG NO. :</b>	A1017-100
<b>AMOUNT:</b>	100 µg (0.5 mg/ml)
<b>HOST:</b>	Rabbit
<b>IMMUNOGEN:</b>	mouse recombinant SHH (Cat. No. 4020)
<b>INTERNAL ID:</b>	BV-Q16
<b>PURIFICATION:</b>	Affinity purified rabbit IgG
<b>MOLECULAR WEIGHT:</b>	20 kDa
<b>FORM:</b>	Liquid
<b>FORMULATION:</b>	Supplied in PBS (pH 7.2) with 0.01 % BSA, 0.03 % ProClin®, and 50 % glycerol
<b>SPECIES REACTIVITY:</b>	Human, Mouse
<b>STORAGE CONDITIONS:</b>	Store at -20°C. Avoid repeated freeze/thaw cycles.
<b>DESCRIPTION:</b>	Intercellular signal essential for a variety of patterning events during development: signal produced by the notochord that induces ventral cell fate in the neural tube and somites, and the polarizing signal for patterning of the anterior-posterior axis of the developing limb bud. Displays both floor plate- and motor neuron-inducing activity. The threshold concentration of N-product required for motor neuron induction is 5-fold lower than that required for floor plate induction. Activates the transcription of target genes by interacting with its receptor PTCH1 to prevent normal inhibition by PTCH1 on the constitutive signaling activity of SMO.
<b>APPLICATION:</b>	Western blot: 1-4 µg/ml

**Note:** This information is only intended as a guide. The optimal dilutions must be determined by the user.



Western Blot analysis of anti-SHH antibody with Jurkat cells (1). Antibody sensitivity is also tested by 2 ng (2), 10 ng (3), 50 ng (4) human SHH recombinant protein.

### RELATED PRODUCTS:

- Active Sonic Hedgehog (SHH), human recombinant (**Cat No. 4010-25, -100 -1000**)
- Active Sonic Hedgehog (SHH), murine recombinant (**Cat No. 4020-25, -100 -1000**)
- Hh Signaling Pathway Antagonist (**Cat. No. 1659-1**)
- Human CellExp™ SHH, human recombinant (**Cat. No. 7223-10**)
- Sonic Hedgehog, human recombinant (H-SHH) (**Cat. No. 7883-25, -100, -1000**)
- BODIPY-Cyclopamine (**Cat. No. 2160-50, -250**)

**FOR RESEARCH USE ONLY! Not to be used on humans.**