

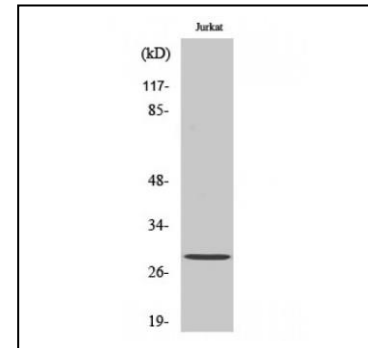
Phospho-Bcl-2 (Thr56) antibody

ALTERNATE NAMES:	BCL2; Apoptosis regulator Bcl-2
CATALOG NO. :	A1012-100
AMOUNT:	100 ul
HOST:	Rabbit
Isotype:	IgG
CLONALITY:	Polyclonal
IMMUNOGEN:	Synthesized peptide derived from human Bcl-2 around the phosphorylation site of Thr56.
PURIFICATION:	Affinity purified
MOLECULAR WEIGHT:	26 kDa
FORM:	Liquid
FORMULATION:	100 ug (1mg/ml) of affinity purified rabbit phospho-Bcl-2 (Thr56) polyclonal antibody in PBS containing 50% glycerol, 0.5% BSA and 0.02% sodium azide
SPECIES REACTIVITY:	Human
STORAGE CONDITIONS:	Store at -20°C. Avoid repeated freeze/thaw cycles.
DESCRIPTION:	The Bcl-2 family of proteins is the best characterized protein family involved in the regulation of apoptotic cell death in variety of cells. Bcl2 is an integral outer mitochondrial membrane protein that regulates mitochondrial calcium homeostasis and proton flux. Several reports suggested that these phosphorylation sites may be targets of the ASK1/MKK7/JNK1 pathway and that phosphorylation of Bcl-2 may be a marker for mitotic events. Mutation of Bcl-2 at Thr56 or S87 inhibits its anti-apoptotic activity during glucocorticoid-induced apoptosis of T lymphocytes.
SPECIFICITY:	Phospho-Bcl-2 (Thr56) Polyclonal Antibody detects endogenous levels of Bcl-2 protein only when phosphorylated at Thr56.

APPLICATIONS:

Western Blot 1:500-1:2000
Immunoprecipitation 1:200-500
Immunohistochemistry 1:100-1:300
Immunofluorescence 1:200-1:1000
ELISA 1:20000

Note: This information is only intended as a guide. The optimal dilutions must be determined by the user.



Detection of Bcl-2 by Western Blot. Western Blot analysis of Jurkat cells using Phospho-Bcl-2 (Thr56) Polyclonal Antibody.

RELATED PRODUCTS:

- Bcl-2 Antibody (Cat. No. 3033-100)
- Bcl-2 Antibody (Clone Bcl-2/100) (Cat. No. 3195-100)
- BCL-2 Inhibitor, ABT-199 (Cat. No. 2253-1)
- Active BCL2L1 Protein, human recombinant (Cat. No. 7885-10)
- ABT-263 (Cat. No. 2467-5)
- ABT-737 (Cat. No. 2463-5)
- AT-101 (Cat. No. 2380-5)
- Bnip3L/Nix Antibody (Cat. No. 2380-5)

FOR RESEARCH USE ONLY! Not to be used on humans.