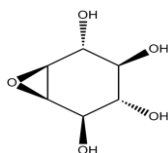


PRODUCT: Conduritol B Epoxide**ALTERNATE NAME:** D,L-1,2-Anhydro-myo-inositol; CBE**CATALOG #:** 9574-5, 25**AMOUNT:** 5 mg, 25 mg**STRUCTURE:****MOLECULAR FORMULA:** C₆H₁₀O₅**MOLECULAR WEIGHT:** 162.14**CAS NUMBER:** 6090-95-5**APPEARANCE:** White to off-white solid**SOLUBILITY:** DMSO (~25 mg/ml)**PURITY:** ≥98%**STORAGE:** Store at -20°C. Protect from air and moisture**DESCRIPTION:** Conduritol B epoxide (CBE) is an irreversible inhibitor of glucocerebrosidase, also known as acid β-glucosidase, glucosylceramidase, GBA, or GBA1 (IC₅₀ = 9 μM). Inhibition of this lysosomal glucosidase results in the accumulation of glucocerebroside without affecting cell viability, lysosomal enzyme release, or the activity of intracellular enzymes. It also does not inhibit non-lysosomal glucosylceramidase or cytosolic β-glucosidase.**REFERENCES:** Newburg, D.S., *et al.* (1986). *Biochim. Biophys. Acta* **877**, 121-126**HANDLING:** Do not take internally. Wear gloves and mask when handling the product! Avoid contact by all modes of exposure.**RELATED PRODUCTS:**Castanospermine (**Cat. No. 2293-10, 50**)Alpha-Glucosidase Activity Colorimetric Assay Kit (**Cat. No. K690-100**)Miglitol (**Cat. No. 2335-5,25**)Pellitorine (**Cat. No. 2053-1, 5**)**USAGE:** **FOR RESEARCH CH USE ONLY! Not to be used in humans**