

Human CellExp™ BTLA, Human recombinant

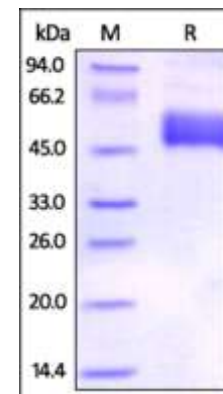
CATALOG #:	9228-10	10 µg
	9228-50	50 µg
ALTERNATE NAMES:	BTLA, CD272	
SOURCE:	HEK 293 cells (Lys 31 - Thr 134)	
PURITY:	≥ 92% by SDS-PAGE gel	
MOL. WEIGHT:	This protein is fused with a human IgG1 Fc tag at C-terminus and the protein has a calculated MW of 38.7 kDa. The predicted N-terminus is Lys 31. The reduced protein migrates as 45-50 kDa in SDS-PAGE due to glycosylation.	
ENDOTOXIN LEVEL:	<1 EU/µg by LAL method	
FORM:	Lyophilized	
FORMULATION:	Lyophilized from 0.22 µm filtered solution in 50 mM tris, 100 mM glycine, pH7.4. Normally Mannitol or Trehalose is added as a protectant before lyophilization.	

STORAGE CONDITIONS: Store at -20°C. After reconstitution, aliquot and store at -20°C and use within 3 months. Avoid repeated freezing and thawing cycles.

RECONSTITUTION: Centrifuge the vial prior to opening. Reconstitute in sterile PBS, pH 7.4 to a concentration of 50 µg/ml. Do not vortex. This solution can be stored at 2-8°C for up to 1 month. For extended storage, it is recommended to store at -20°C.

DESCRIPTION: B- and T-lymphocyte attenuator (BTLA) is also known as B- and T-lymphocyte-associated protein, CD antigen CD272. BTLA contains one Ig-like V-type (immunoglobulin-like) domain. As a lymphocyte inhibitory receptor, BTLA / CD272 inhibits lymphocytes during immune response. BTLA / CD272 can interact with tyrosine phosphatases PTPN6/SHP-1 and PTPN11/SHP-2, and interact with TNFRSF14/HVEM.

BIOLOGICAL ACTIVITY: Measured by its binding ability in a functional ELISA. Immobilized recombinant human HVEM protein, C-Twin Strep Tag at 2 µg/ml (100 µl/well) can bind recombinant human BTLA /CD272 (31-134) protein, C-Fc with a linear range of 0.01 – 0.5 µg/mL



The purity of Human BTLA (31-134), Fc Tag was determined by SDS-PAGE under reducing (R) condition and staining overnight with Coomassie Blue.

RELATED PRODUCTS:

- Human CellExp™ CD166/ ALCAM, human recombinant (**Cat. No. 7437-10, -50**)
- Human CellExp™ CD172A / SIRP, human recombinant (**Cat. No. 7506-10, -50**)
- Human CellExp™ CD33 / SIGLEC-3, human recombinant (**Cat. No. 7370-10, -50**)
- Human CellExp™ CD47, human recombinant (**Cat. No. 7385-10, -50**)
- Human CellExp™ CD55/DAF, human recombinant (**Cat. No. 7432-10, -50**)
- Human CellExp™ CD58 /LFA-3, human recombinant (**Cat. No. 7427-10, -50**)
- Human CellExp™ CD62E/E-Selectin, human recombinant (**Cat. No. 7434-20, -100**)
- Human CellExp™ CD71 / TFRC / TFR, human recombinant (**Cat. No. 7279-10, -50**)
- Human CellExp™ CD74/DHLAG, human recombinant (**Cat. No. 7387-10, -50**)
- Human CellExp™ CD223, human recombinant (**Cat. No. 7278-10, -50**)
- Human CellExp™ CD71, human recombinant (**Cat. No. 7279-10, -50**)
- Human CellExp™ CD273, human recombinant (**Cat. No. 7369-10, -50**)
- Human CellExp™ CD36, human recombinant (**Cat. No. 7371-10, -50**)

FOR RESEARCH USE ONLY! Not to be used on humans.