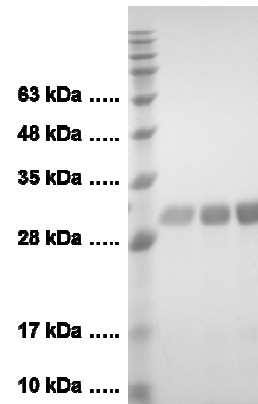


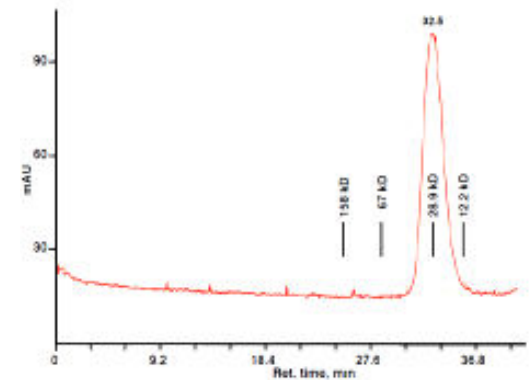
# Cathepsin B, Active, human recombinant

<b>CATALOG #:</b>	7580-5	5 µg
	7580-50	50 µg
	7580-1000	1 mg
<b>ALTERNATIVE NAMES:</b>	CTSB, CPSB	
<b>SOURCE:</b>	<i>E. coli</i>	
<b>FORM:</b>	Liquid.	
<b>FORMULATION:</b>	0.5 mg/ml solution of protein in 25 mM sodium acetate, 50 mM NaCl, pH 5.0 containing 50% glycerol.	
<b>PURITY:</b>	≥90% by SDS-PAGE	
<b>MOL. WT.:</b>	27.8 kDa (80-333 aa)	
<b>STORAGE CONDITIONS:</b>	Stable for at least 1 year as supplied. Dilute in de-ionized water to 0.1 mg/ml and store at -80°C. Avoid repeated freezing and thawing cycles.	
<b>BACKGROUND:</b>	Cathepsin B is a lysosomal cysteine protease. It is implicated in playing a role in protein degradation, arthritis, apoptosis, and cancer.	
<b>ACTIVITY ASSAY:</b>	BioVision's Active Cathepsin B has been activated through auto-catalytic activation of Procathepsin B (Cat # 7579) at low pH. The enzyme is fully active as seen from its ability to cleave a fluorogenic substrate Z-Arg-Arg-AFC (K140-100).	
<b>APPLICATIONS:</b>	Recombinant Cathepsin B is useful in inhibitor screening, kinetic studies and cleavage of substrates in vitro or in tissue culture.	
<b>SPECIFIC ACTIVITY:</b>	>7500 mU/mg (1U = 1 µmole/min digestion of Ac-Arg-Arg-AFC substrate (K140-100)).	

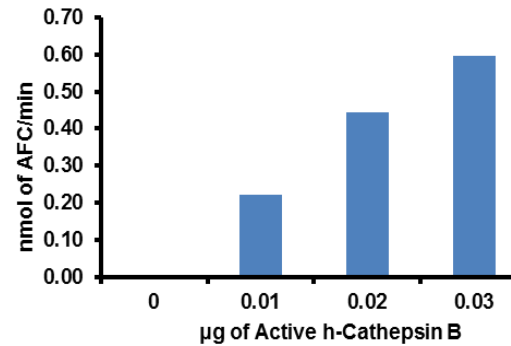
**For Research Use Only! Not to be used in humans.**



SDS-PAGE (15%) of h-Cathepsin B:  
 1: Protein Marker  
 2: Human Cathepsin B (5 µg)  
 3: Human Cathepsin B (10 µg)  
 4: Human Cathepsin B (15 µg)



SEC analysis of h-Cathepsin B using a Superdex 200 HR 10/30 column at 0.5 ml/min in 50 mM Tris and 0.25 M NaCl pH 7.5.



Measurement of h-Cathepsin B activity by Cathepsin B Activity Assay Kit (K140-100).

**RELATED PRODUCTS:**

- Cathepsin K, Active, human recombinant (Cat. No. 7600-5, -50)
- Cathepsin K, Active, mouse recombinant (Cat. No. 7597-5, -50)
- Cathepsin K, Active, rat recombinant (Cat. No. 7598-5, -50)
- Cathepsin B (active, human) (Cat. No. 1021-5)
- Cathepsin D (active, human) (Cat. No. 1022-5)
- Cathepsin H (active, human) (Cat. No. 1023-5)
- Cathepsin L, human recombinant (Cat. No. 1135-5, 100, 1000)
- Procathepsin K, human recombinant (Cat. No. 1026-10, 50, -1000)
- Procathepsin K, mouse recombinant (Cat. No. 1027-10, 50, -1000)
- Procathepsin K, rat recombinant (Cat. No. 1029-10, 50, -1000)
- Procathepsin B, human recombinant (Cat. No. 7579-10, 50, -1000)
- Procathepsin L, human recombinant (Cat. No. 7581-10, 50, -1000)