

# Human CellExp™ CD58 /LFA-3, human recombinant

<b>CATALOG #:</b>	7427-10	10 µg
	7427-50	50 µg
<b>ALTERNATE NAMES:</b>	CD58, LFA3, Ag3	
<b>SOURCE:</b>	HEK 293 cells (Phe 29 – Arg 215)	
<b>PURITY:</b>	≥ 95% by SDS-PAGE gel	
<b>MOL. WEIGHT:</b>	This protein is fused with 6xHis tag at the C-terminus, has a calculated MW of 22.3 kDa. The predicted N-terminus is Phe 29. DTT-reduced Protein migrates as 30-45 kDa due to different glycosylation.	
<b>ENDOTOXIN LEVEL:</b>	<1 EU/µg by LAL method	
<b>FORM:</b>	Lyophilized	

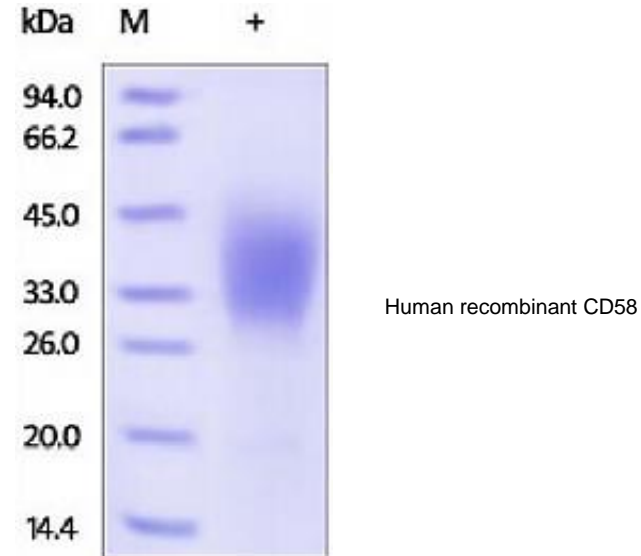
**FORMULATION:** Lyophilized from 0.22 µm filtered solution in PBS, pH7.4. Normally Mannitol or Trehalose is added as protectants before lyophilization.

**STORAGE CONDITIONS:** Store at -20°C. After reconstitution, aliquot and store at -20°C and use within 3 months. Avoid repeated freezing and thawing cycles.

**RECONSTITUTION:** Centrifuge the vial prior to opening. Reconstitute in sterile PBS, pH 7.4 to a concentration of 50 µg/ml. Do not vortex. This solution can be stored at 2-8°C for up to 1 month. For extended storage, it is recommended to store at -20°C.

**DESCRIPTION:** CD antigen CD58 is also known as Lymphocyte function-associated antigen 3 (LFA-3). CD58 is a cell adhesion molecule expressed on Antigen Presenting Cells (APC), particularly macrophages. CD58 /LFA3 is ligand of the T-lymphocyte CD2 glycoprotein, which binds to CD2 (LFA-2) on T cells and is important in strengthening the adhesion between the T cells and Professional Antigen Presenting Cells. In addition, the LFA-3/CD2 interaction may prime response by both the CD2+ and LFA-3+ cells. Polymorphisms in the CD58 gene are associated with increased risk for multiple sclerosis.

**BIOLOGICAL ACTIVITY:** Measured in a cell proliferation assay using human CD3+ T cells in the presence of anti-CD3. The ED<sub>50</sub> for this effect is typically 1 - 5 µg/ml in the presence of anti-CD3 immobilized at 25 ng/ml.



## RELATED PRODUCTS:

- Human CellExp™ CD223, human recombinant (Cat. No. 7278-10, -50)
- Human CellExp™ CD71, human recombinant (Cat. No. 7279-10, -50)
- Human CellExp™ CD273, human recombinant (Cat. No. 7369-10, -50)
- Human CellExp™ CD33, human recombinant (Cat. No. 7370-10, -50)
- Human CellExp™ CD36, human recombinant (Cat. No. 7371-10, -50)
- Human CellExp™ CD87, human recombinant (Cat. No. 7372-20, -100)
- Human CellExp™ CD360, human recombinant (Cat. No. 7373-20, -100)
- Human CellExp™ CD244, human recombinant (Cat. No. 7374-10, -50)
- Human CellExp™ CD304, human recombinant (Cat. No. 7375-10)
- Human CellExp™ CD319, human recombinant (Cat. No. 7376-10, -50)
- Human CellExp™ CD306, human recombinant (Cat. No. 7377-10, -50)
- Human CellExp™ CD84, human recombinant (Cat. No. 7378-10, -50)

**FOR RESEARCH USE ONLY! Not to be used in humans.**