

# Human CellExp™ CD319 / SLAMF7 / CRACC, human recombinant

**CATALOG #:** 7376-10 10 µg  
7376-50 50 µg

**ALTERNATE NAMES:** SLAMF7, CD319, CS1, CRACC, 19A, FOAP-12

**SOURCE:** HEK 293 cells (Ser 23 – Met 226)

**PURITY:** ≥ 95% by SDS-PAGE gel

**MOL. WEIGHT:** This protein is fused with 6×His tag at the C-terminus, has a calculated MW of 23.2 kDa. The predicted N-terminus is Ser 23. DTT-reduced Protein migrates as 33-48 kDa due to glycosylation.

**ENDOTOXIN LEVEL:** <1 EU/µg by LAL method

**FORM:** Lyophilized

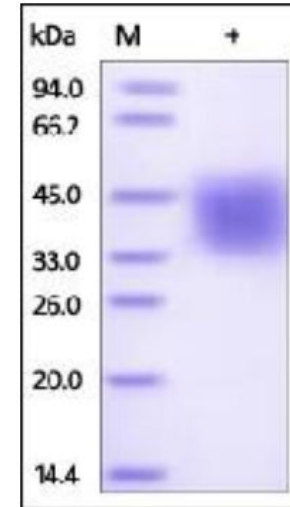
**FORMULATION:** Lyophilized from 0.22 µm filtered solution in PBS, pH7.4. Generally 5-8% Mannitol or trehalose is added as a protectant before lyophilization.

**STORAGE CONDITIONS:** Store at -20°C. After reconstitution, aliquot and store at -20°C and use within 3 months. Avoid repeated freezing and thawing cycles.

**RECONSTITUTION:** Centrifuge the vial prior to opening. Reconstitute in sterile PBS, pH 7.4 to a concentration of 50 µg/ml. Do not vortex. This solution can be stored at 2-8°C for up to 1 month. For extended storage, it is recommended to store at -20°C.

**DESCRIPTION:** SLAM family member 7 (SLAMF7) is also known as CD2-like receptor-activating cytotoxic cells (CRACC), Membrane protein FOAP-12, CD antigen CD319, Novel Ly9, Protein 19A, which is a single-pass type I membrane protein and a member of the CD2 family of cell surface receptors. SLAMF7 is expressed in spleen, lymph node, peripheral blood leukocytes, bone marrow, small intestine, stomach, appendix, lung and trachea. Isoform 1 of SLAMF7 mediates NK cell activation through a SH2D1A-independent extracellular signal-regulated ERK-mediated pathway. May play a role in lymphocyte adhesion. Isoform 3 of SLAMF7 does not mediate any NK cell activation.

**BIOLOGICAL ACTIVITY:** Measured by its ability to bind biotinylated human SLAMF7 in a functional ELISA.



Human recombinant CD319/SLAMF7/CRACC

## RELATED PRODUCTS:

- Human CellExp™ CD223, human recombinant (Cat. No. 7278-10, -50)
- Human CellExp™ CD71, human recombinant (Cat. No. 7279-10, -50)
- Human CellExp™ CD273, human recombinant (Cat. No. 7369-10, -50)
- Human CellExp™ CD33, human recombinant (Cat. No. 7370-10, -50)
- Human CellExp™ CD36, human recombinant (Cat. No. 7371-10, -50)
- Human CellExp™ CD87, human recombinant (Cat. No. 7372-20, -100)
- Human CellExp™ CD360, human recombinant (Cat. No. 7373-20, -100)
- Human CellExp™ CD244, human recombinant (Cat. No. 7374-10, -50)

**FOR RESEARCH USE ONLY! Not to be used in humans.**