

Human CellExp™ CD244 / 2B4 / SLAMF4, human recombinant

CATALOG #: 7374-10 10 µg
7374-50 50 µg

ALTERNATE NAMES: CD244, 2B4, SLAMF4, NKR2B4, NAIL, h2B4

SOURCE: HEK 293 cells (Cys 22 – Arg 221)

PURITY: ≥ 95% by SDS-PAGE gel

MOL. WEIGHT: This protein is fused with polyhistidine tag at the C-terminus, and has a calculated MW of 23.1 kDa. The predicted N-terminus is Cys 22. DTT-reduced Protein migrates as 40-50 kDa due to glycosylation.

ENDOTOXIN LEVEL: <1 EU/µg by LAL method

FORM: Lyophilized

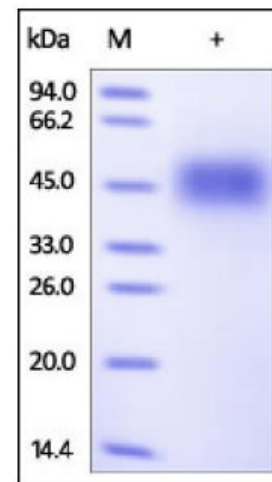
FORMULATION: Lyophilized from 0.22 µm filtered solution in PBS, pH7.4. Generally 5-8% Mannitol or trehalose is added as a protectant before lyophilization.

STORAGE CONDITIONS: Store at -20°C. After reconstitution, aliquot and store at -20°C and use within 3 months. Avoid repeated freezing and thawing cycles.

RECONSTITUTION: Centrifuge the vial prior to opening. Reconstitute in sterile PBS, pH 7.4 to a concentration of 50 µg/ml. Do not vortex. This solution can be stored at 2-8°C for up to 1 month. For extended storage, it is recommended to store at -20°C.

DESCRIPTION: Natural killer cell receptor 2B4 is also known as NK cell type I receptor protein 2B4 (NKR2B4 or h2B4), SLAM family member 4 (SLAMF4), Signaling lymphocytic activation molecule 4, CD antigen CD244. NKR2B4 / CD244 contain two Ig-like (immunoglobulin-like) domains. CD244 is expressed in spleen, PBL, followed by lung, liver, testis and small intestine. CD244 interacts with CD48. Following phosphorylation, CD244 is able to recruit PTPN11/SHP-2 and SH2D1A/SAP. SLAMF4 modulate other receptor-ligand interactions to enhance leukocyte activation. CD244/2B4 is the only heterophilic receptor of SLAM family.

BIOLOGICAL ACTIVITY: Measured by its binding ability in a functional ELISA. Immobilized rh CD244 / 2B4 at 2 µg/ml (100 µl/well) can bind human CD48. The EC₅₀ of human CD48 is 0.39 µg/ml.



Human recombinant CD244/2B4/SLAMF4

RELATED PRODUCTS:

- Human CellExp™ CD223, human recombinant (Cat. No. 7278-10, -50)
- Human CellExp™ CD71, human recombinant (Cat. No. 7279-10, -50)
- Human CellExp™ CD273, human recombinant (Cat. No. 7369-10, -50)
- Human CellExp™ CD33, human recombinant (Cat. No. 7370-10, -50)
- Human CellExp™ CD36, human recombinant (Cat. No. 7371-10, -50)
- Human CellExp™ CD87, human recombinant (Cat. No. 7372-20, -100)
- Human CellExp™ CD360, human recombinant (Cat. No. 7373-20, -100)
- Human CellExp™ CD304, human recombinant (Cat. No. 7375-10)

FOR RESEARCH USE ONLY! Not to be used in humans.