

# CD300C, human recombinant

**CATALOG #:** 7312-100 100 µg

**ALTERNATE NAMES:** CMRF35-like molecule 6, CLM-6, CMRF-35, CMRF-35A, CMRF35, CMRF35-A1, CMRF35A, CMRF35A1, IGSF16, LIR

**SOURCE:** E. coli

**PURITY:** > 85% by SDS-PAGE

**MOL. WEIGHT:** 20.2 kDa (186 aa, 21-183 aa + His tag), confirmed by MALDI-TOF.

**ENDOTOXIN LEVEL:** < 1.0 EU per 1 µg of protein

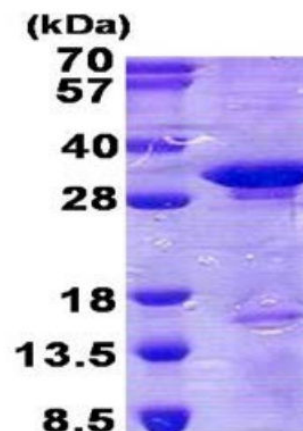
**FORM:** Liquid

**FORMULATION:** 1 mg/ml in 20 mM Tris-HCl buffer (pH 8.0) containing 0.4 M Urea and 10% glycerol.

**STORAGE CONDITIONS:** Can be stored at 4°C short term (1-2 weeks). For long term storage, aliquot and store at -20°C or -70°C. Avoid repeated freezing and thawing cycles.

**DESCRIPTION:** CMRF35-like molecule 6, also known as CD300C, belongs to the CD300 family. The CMRF35 antigen, which was identified by reactivity with a monoclonal antibody, is present on monocytes, neutrophils, and some T and B lymphocytes. Recombinant human CD300C protein, fused to His-tag at N-terminus, was expressed in E.coli.

**AMINO ACID SEQUENCE:** MGSSHHHHHH SSGLVPRGSH MGSYFPLSH  
 PMTVAGPVGG SLSVQCRYEK EHRTLKFWC RPPQILRCDK IVETKGSAGK  
 RNGRVSIRDS PANLSFTVTL ENLTEEDAGT YWCGVDTPWL RDFHDPIVEV  
 EVSVFPAGTT TASSPQSSMG TSGPPTKLPV HTWPSVTRKD SPEPSHPGSLFSNVR



15% SDS-PAGE (3µg)

CD300C, human recombinant

**RELATED PRODUCTS:**

- CD1E, human recombinant (Cat. No. 7308-100)
- CD200, human recombinant (Cat. No. 7309-100)
- CD226, human recombinant (Cat. No. 7310-100)
- CD274, mouse recombinant (Cat. No. 7311-100)
- CD3G, human recombinant (Cat. No. 7313-100)
- CD46, human recombinant (Cat. No. 7314-100)
- CD5, human recombinant (Cat. No. 7315-100)
- CD7, human recombinant (Cat. No. 7316-100)
- CD74, human recombinant (Cat. No. 7317-100)
- CD79B, human recombinant (Cat. No. 7318-100)
- CD84, human recombinant (Cat. No. 7319-100)
- CD8B, human recombinant (Cat. No. 7320-100)

**FOR RESEARCH USE ONLY! Not to be used in humans.**