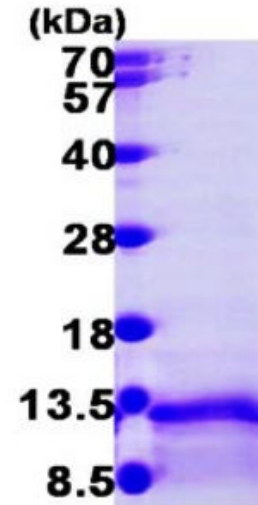


CCL3L1, human recombinant

CATALOG #:	7305-100	100 µg
ALTERNATE NAMES:	C-C motif chemokine 3-like 1, CCL3L3, D17S1718, G0S19-2, LD78, LD78BETA, MIP1AP, SCYA3L; SCYA3L1	
SOURCE:	E. coli	
PURITY:	> 90% by SDS-PAGE	
MOL. WEIGHT:	10 kDa (90 aa, 26-93 aa + His tag), confirmed by MALDI-TOF.	
ENDOTOXIN LEVEL:	< 1.0 EU per 1 microgram of protein	
FORM:	Liquid	
FORMULATION:	0.25 mg/ml in Phosphate Buffered Saline pH 7.4 containing 10% glycerol	
STORAGE CONDITIONS:	Can be stored at +4°C short term (1-2 weeks). For long term storage, aliquot and store at -20°C or -70°C. Avoid repeated freezing and thawing cycles.	

DESCRIPTION: CCL3L1 is a small cytokine belonging to the CC chemokine. This protein is involved in immunoregulatory and inflammatory processes. It binds to several chemokine receptors including chemokine binding protein 2 (CCBP2 or D6) and chemokine (C-C motif) receptor 5 (CCR5). Recombinant human CCL3L1 protein, fused to His-tag at N-terminus, was expressed in E.coli and purified by conventional chromatography, after refolding of the isolated inclusion bodies in a renaturation buffer.

AMINO ACID SEQUENCE: MGSSHHHHH SSSLVPRGSH MSLAADTPTA
CCFSYTSRQI PQNFIADYFE TSSQCSKPSV IFLTKRGRQV CADPSEEWVQ
KYVSDLELSA



15% SDS-PAGE (3µg)

CCL3L1, human recombinant

RELATED PRODUCTS:

- Eotaxin-3/CCL26, human recombinant (**Cat. No. 7138-10, -50**)
- Eotaxin-2/CCL24, human recombinant (**Cat. No. 4497-20, -1000**)
- Eotaxin/CCL11, human recombinant (**Cat. No. 4028-20, -100, -1000**)
- Eotaxin/CCL11, murine recombinant (**Cat. No. 4029-10, -1000**)
- Eotaxin/CCL11 Antibody (**Cat. No. 5029-100**)

FOR RESEARCH USE ONLY! Not to be used in humans.