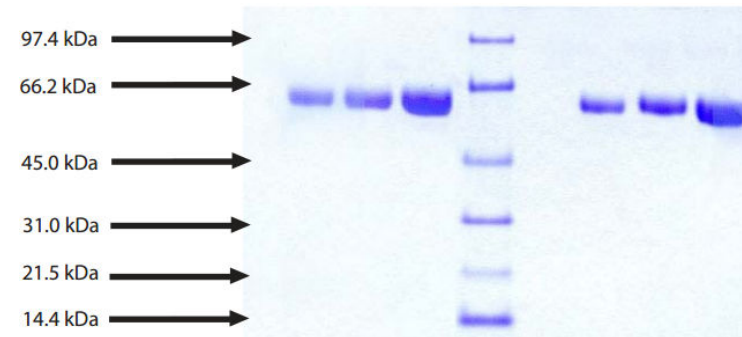


Alpha 2 Antiplasmin, Human Plasma

CATALOG #:	7295-100	100 µg
ALTERNATE NAMES:	Alpha-2-plasmin inhibitor, SERPINF2, AAP, PLI	
SOURCE:	Human Plasma. Shown to be non-reactive for HBsAg, anti-HCV, anti-HBc, and negative for anti-HIV 1 & 2 by FDA approved tests.	
PURITY:	≥ 95% by SDS-PAGE	
MOL. WEIGHT:	70 kDa	
EXTINCTION COEFFICIENT:	0.703	
FORM:	Lyophilized	
FORMULATION:	Lyophilized from 20 mM Bis-Tris, pH 6.4, with 200 mM NaCl.	
STORAGE CONDITIONS:	Store at -20°C or lower. Avoid repeated freezing and thawing cycles.	

DESCRIPTION: Alpha 2 Antiplasmin is a member of the Serpin superfamily and the primary physiological inhibitor of the serine protease plasmin, which is responsible for the dissolution of fibrin clots. In addition to plasmin, it is also an efficient inhibitor of trypsin and chymotrypsin. Liver and kidney are major sites of its production and other tissues such as muscle, intestine, central nervous system, and placenta also express its mRNA at a moderate level. The tissue expression pattern indicates that it is a key regulator of plasmin mediated proteolysis in these tissues. Alpha-Antiplasmin-deficiency is a rare coagulation disorder which allows unrestrained fibrinolytic activity. Individuals with this condition may receive therapeutic A2AP prior to surgery to prevent postoperative hemorrhaging.

ACTIVITY: ≥ 5.0 IU/mg



Alpha 2 Antiplasmin, Human Plasma

4-12% Bis-Tris NuPAGE gel

1. Alpha 2 Antiplasmin - 3 µg (reduced / heated)
2. Alpha 2 Antiplasmin - 5 µg (reduced / heated)
3. Alpha 2 Antiplasmin - 10 µg (reduced / heated)
4. LMW Standard
5. Alpha 2 Antiplasmin - 3 µg (non-reduced / no heat)
6. Alpha 2 Antiplasmin - 5 µg (non-reduced / no heat)
7. Alpha 2 Antiplasmin - 10 µg (non-reduced / no heat)

RELATED PRODUCTS:

- Trypsin Activity Colorimetric Assay Kit (**Cat. No. K771-100**)
- Trypsin, Human pancreas (**Cat. No. 7292-50**)
- Alpha 1 Antichymotrypsin, Human Plasma (**Cat. No. 7293-100**)
- Serpin E1/PAI-1, human recombinant, (**Cat. No. 4731-10, -100, -1000**)
- Human CellExp™ SERPINA1 /A1AT, human recombinant, (**Cat. No. 7235-10**)
- Serpin A6 Antibody (**Cat. No. 3906-100**)
- Serpin A6 Blocking Peptide (**Cat. No. 3906BP-100**)
- Neuroserpin, human recombinant, (**Cat. No. 7181-10, -50**)

FOR RESEARCH USE ONLY! Not to be used in humans.