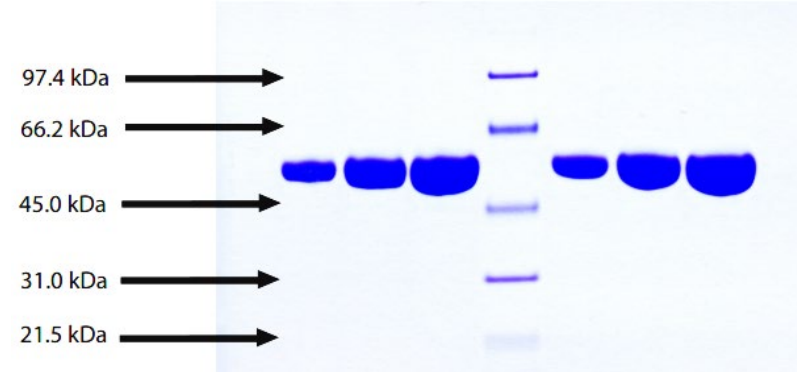


Alpha 1 Antitrypsin, Human Plasma

CATALOG #:	7294-1000	1 mg
ALTERNATE NAMES:	Alpha-1 protease inhibitor, Alpha-1-antiproteinase, Serpin A1, AAT, PI	
SOURCE:	Human Plasma. Shown to be non-reactive for HBsAg, anti-HCV, anti-HBc, and negative for anti-HIV 1 & 2 by FDA approved tests.	
PURITY:	≥ 95% by SDS-PAGE	
MOL. WEIGHT:	52 kDa	
EXTINCTION COEFFICIENT:	0.433	
FORM:	Lyophilized	
FORMULATION:	Lyophilized from 30 mM Na Phosphate, pH 6.5 with 300 mM NaCl.	
STORAGE CONDITIONS:	Store at -20°C or lower. Avoid repeated freezing and thawing cycles.	

DESCRIPTION: Alpha 1 Antitrypsin is an acute-phase plasma protein found at 290 mg per 100 ml. It functions as a serine protease inhibitor with targets like elastase, plasmin, collagenase, thrombin, leucocyte proteases, trypsin, chymotrypsin, and plasminogen activator. Clinically, its deficiency is associated with two major diseases: pulmonary emphysema and early onset/juvenile hepatic cirrhosis. It is elevated in inflammatory conditions, malignancies, liver disease and pregnancy and also after surgical trauma and use of oral contraceptives. The simultaneous quantitative determination of alpha-1-PI and ceruloplasmin permits differential diagnosis of liver afflictions. Rise in alpha 1 antitrypsin occurs as an acute phase response to tissue necrosis and inflammation.

ACTIVITY: Shows 75-100% inhibition when tested with active-site titrated porcine pancreatic trypsin using Na-Benzoyl-L-Arginine-para-Nitroanilide Hydrochloride (L-BAPNA) as substrate.



Alpha 1 Antitrypsin, Human Plasma

4-12% Bis-Tris NuPAGE gel

1. A1P1 - 5 µg (reduced / heated)
2. A1P1 - 10 µg (reduced / heated)
3. A1P1 - 20 µg (reduced / heated)
4. LMW Standard
5. A1P1 - 5 µg (non-reduced / no heat)
6. A1P1 - 10 µg (non-reduced / no heat)
7. A1P1 - 20 µg (non-reduced / no heat)

RELATED PRODUCTS:

- Trypsin Activity Colorimetric Assay Kit (**Cat. No. K771-100**)
- Trypsin, Human pancreas (**Cat. No. 7292-50**)
- Alpha 1 Antichymotrypsin, Human Plasma (**Cat. No. 7293-100**)
- Serpin E1/PAI-1, human recombinant, (**Cat. No. 4731-10, -100, -1000**)
- Human CellExp™ SERPINA1 /A1AT, human recombinant, (**Cat. No. 7235-10**)
- Serpin A6 Antibody (**Cat. No. 3906-100**)
- Serpin A6 Blocking Peptide (**Cat. No. 3906BP-100**)
- Neuroserpin, human recombinant, (**Cat. No. 7181-10, -50**)

FOR RESEARCH USE ONLY! Not to be used in humans.