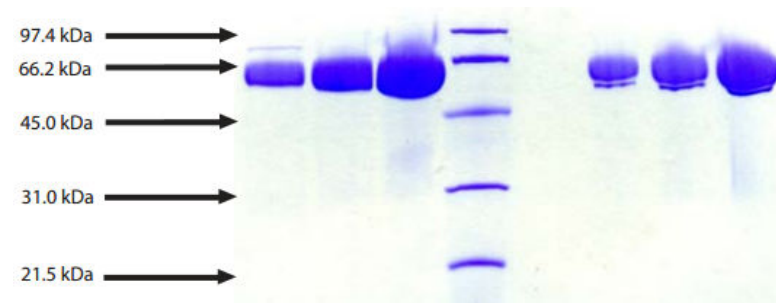


Alpha 1 Antichymotrypsin, Human Plasma

CATALOG #:	7293-100	100 µg
ALTERNATE NAMES:	Cell growth-inhibiting gene 24/25 protein, Serpin A3, SERPINA3, AACT, GIG24, GIG25	
SOURCE:	Human Plasma. Shown to be non-reactive for HBsAg, anti-HCV, anti-HBc, and negative for anti-HIV 1 & 2 by FDA approved tests.	
PURITY:	≥ 95% by SDS-PAGE	
MOL. WEIGHT:	64 kDa	
EXTINCTION COEFFICIENT:	0.6	
FORM:	Lyophilized	
FORMULATION:	Lyophilized from 20 mM Tris-HCl, pH 7.4, with 150 mM NaCl.	
STORAGE CONDITIONS:	Store at -20°C or lower. Avoid repeated freezing and thawing cycles.	

DESCRIPTION: Alpha 1 antichymotrypsin is an acute-phase plasma protein found at 45 mg per 100 ml. ACT functions as a specific inhibitor of chymotrypsin-like serine proteases. Although its physiological function is unclear, it can inhibit neutrophil cathepsin G and mast cell chymase, both of which can convert angiotensin-1 to the active angiotensin-2. Clinically, it is elevated in inflammatory conditions, some malignancies, Crohn's disease, ulcerative colitis, and burn injuries. The PSA-ACT complex level is considered a biomarker for prostate cancer. Defects in this gene may be a cause of chronic obstructive pulmonary disease.



Alpha 1 Antichymotrypsin, Human Plasma

12% Tris-HCl gel

1. Alpha 1 Antichymotrypsin - 5 µg (reduced / heated)
2. Alpha 1 Antichymotrypsin - 10 µg (reduced / heated)
3. Alpha 1 Antichymotrypsin - 20 µg (reduced / heated)
4. LMW Standard
5. Alpha 1 Antichymotrypsin - 5 µg (non-reduced / no heat)
6. Alpha 1 Antichymotrypsin - 10 µg (non-reduced / no heat)
7. Alpha 1 Antichymotrypsin - 20 µg (non-reduced / no heat)

RELATED PRODUCTS:

- Trypsin Activity Colorimetric Assay Kit (**Cat. No. K771-100**)
- Trypsin, Human pancreas (**Cat. No. 7292-50**)
- Alpha 1 Antitrypsin, Human Plasma (**Cat. No. 7294-1000**)
- Serpin E1/PAI-1, human recombinant, (**Cat. No. 4731-10, -100, -1000**)
- Human CellExp™ SERPINA1 /A1AT, human recombinant, (**Cat. No. 7235-10**)
- Serpin A6 Antibody (**Cat. No. 3906-100**)
- Serpin A6 Blocking Peptide (**Cat. No. 3906BP-100**)
- Neuroserpin, human recombinant, (**Cat. No. 7181-10, -50**)

FOR RESEARCH USE ONLY! Not to be used in humans.