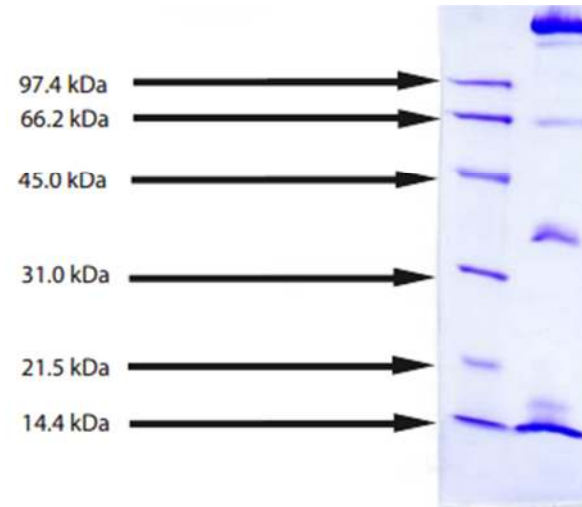


# Chylomicrons, Human Plasma

<b>CATALOG #:</b>	7285-1000	1 mg
<b>ALTERNATE NAMES:</b>	AD2, LDLCQ5, LPG, MGC1571	
<b>SOURCE:</b>	Fresh, non-frozen Human Plasma. Prepared from plasma shown to be non-reactive for HBsAg, anti-HCV, anti-HBc, and negative for anti-HIV 1 & 2 by FDA approved tests.	
<b>PURITY:</b>	≥ 95% of total lipoprotein content by electrophoresis. Single arc by IEP against antisera to whole human serum. Essentially free of other plasma lipoproteins as determined by electrophoresis using a SPIFE Vis Cholesterol gel kit for lipids and Coomassie Blue for proteins.	
<b>MOL. WEIGHT:</b>	50-1,000 kDa	
<b>DENSITY:</b>	<0.95 g/ml	
<b>COMPOSITION:</b>	98% lipid, 2% protein.	
<b>FORM:</b>	Liquid	
<b>FORMULATION:</b>	In 150 mM NaCl, pH 7.4, and 0.01% EDTA	
<b>STORAGE CONDITIONS:</b>	Store at 2-6°C; Do NOT Freeze; Store Away from Light	

**DESCRIPTION:**

Chylomicrons are the large triglyceride-rich lipoproteins of enteric origin that carry exogenous triglycerides into the plasma. Circulation of chylomicrons distributes dietary triglyceride to adipose tissue and to muscle. Found in post prandial plasma, chylomicrons generally clear the blood stream in a few hours.

**Chylomicrons, Human Plasma**

12% BIO-RAD Tris HCl gel  
1. MW Standard  
Chylomicrons - 10 µg (reduced / heat)

**RELATED PRODUCTS:**

- ApoA-1, human recombinant (Cat # 4693-20, -100, -1000)
- ApoA-1, rat recombinant (Cat # 4695-20, -100, -1000)
- Apo-D, human recombinant (Cat # 4326-10, -1000)
- APO-J / Clusterin (Cat. No. 4325-10, -500)
- Apo-SAA, human recombinant (Cat # 4324-50, -500, -1000)
- ApoE2, human recombinant (Cat # 4760-50, -100, -500, -1000, -5000)
- ApoE3, human recombinant (Cat # 4696-50, -100, -500, -5000)
- ApoE4, human recombinant (Cat # 4699-50, -100, -500, -1000, -5000)
- Apolipoprotein CI, Human Plasma (Cat # 4703-100)
- Apolipoprotein CII, Human Plasma (Cat # 4704-50)
- Apolipoprotein CIII, Human Plasma (Cat # 4706-100)

**FOR RESEARCH USE ONLY! Not to be used in humans.**