

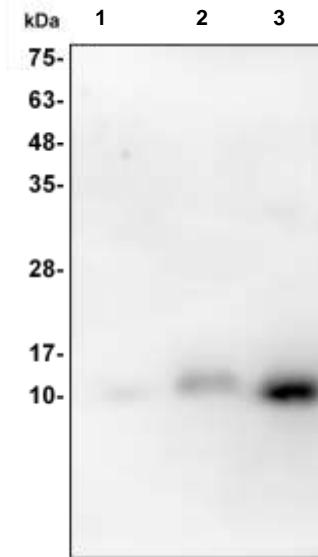
Lactalbumin Antibody

| | | |
|----------------------------|---|--------------------|
| ALTERNATE NAMES: | Lactalbumin, Human Milk | |
| CATALOG NO: | 7006-30T | 30 µg (Trial size) |
| | 7006-100 | 100 µg |
| AMOUNT: | 100 µg | |
| HOST: | Rabbit | |
| IMMUNOGEN: | Human Lactalbumin (Cat. No. 7286) | |
| INTERNAL ID: | BV-P45 | |
| PURIFICATION: | Affinity purified rabbit IgG | |
| FORM: | Liquid | |
| FORMULATION: | 0.5 mg/ml of antibody in PBS pH 7.2, 0.01 % BSA, 0.03 % ProClin® and 50 % glycerol. | |
| SPECIES REACTIVITY: | N/A | |
| STORAGE CONDITIONS: | Store at -20°C. Avoid repeated freeze/thaw cycles. | |

DESCRIPTION: α-Lactalbumin is an important whey protein in cow's milk, and is also present in the milk of many other mammalian species. In primates, alpha-lactalbumin expression is upregulated in response to the hormone prolactin and increases the production of lactose. α-Lactalbumin forms the regulatory subunit of the lactose synthase (LS) heterodimer and β-1,4-galactosyltransferase (beta4Gal-T1) forms the catalytic component. Together, these proteins enable LS to produce lactose by transferring galactose moieties to glucose. As a monomer, alpha-lactalbumin strongly binds calcium and zinc ions and may possess bactericidal or antitumor activity. When formed into a complex with Gal-T1, a galactosyltransferase, α-lactalbumin, enhances the enzyme's affinity for glucose by about 1000 times, and inhibits the ability to polymerize multiple galactose units. This gives rise to a pathway for forming lactose by converting Gal-TI to Lactose synthase.

APPLICATION: Western blot: 1-4 µg

Note: This information is only intended as a guide. The optimal dilutions must be determined by the user.



Western blot with human Lactalbumin antibody:

Lane 1: 10 ng h Lactalbumin
 Lane 2: 50 ng h Lactalbumin
 Lane 3: 200 ng h Lactalbumin

RELATED PRODUCTS:

- Lactalbumin, Human Milk (Cat # 7286-1000, -5000)

FOR RESEARCH USE ONLY! Not to be used on humans.