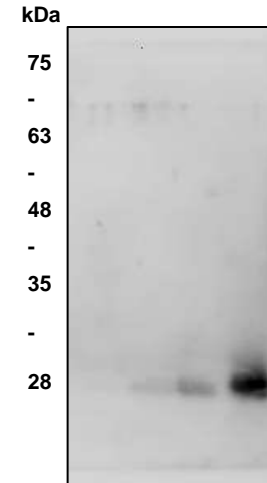


## BNP Antibody

<b>ALTERNATE NAMES:</b>	NPPB, Natriuretic Peptide Precursor B, BNP, B-type Natriuretic Peptide	
<b>CATALOG NO:</b>	6962-30T	30 µg (Trial size)
	6962-100	100 µg
<b>HOST:</b>	Rabbit	
<b>IMMUNOGEN:</b>	Human BNP (Cat. No. 4875)	
<b>INTERNAL ID:</b>	BV-P11	
<b>PURIFICATION:</b>	Affinity purified rabbit IgG	
<b>FORM:</b>	Liquid	
<b>FORMULATION:</b>	0.5 mg/ml of antibody in PBS pH 7.2, 0.01 % BSA, 0.03 % ProClin® and 50 % glycerol.	
<b>SPECIES REACTIVITY:</b>	Human	
<b>STORAGE CONDITIONS:</b>	Store at -20°C. Avoid repeated freeze/thaw cycles.	
<b>DESCRIPTION</b>	Natriuretic Peptide Precursor B acts as a cardiac hormone with a variety of biological actions including natriuresis, diuresis, vasorelaxation, and inhibition of renin and aldosterone secretion. It is thought to play a key role in cardiovascular homeostasis. It helps to restore the body's salt and H <sub>2</sub> O balance and improves heart function.	
<b>APPLICATION:</b>	Western blot: 1-4 µg	

**Note:** This information is only intended as a guide. The optimal dilutions must be determined by the user.



### Western blot with BNP antibody:

Lane 1: 10 ng human BNP  
Lane 2: 50 ng human BNP  
Lane 3: 200 ng human BNP  
Lane 4: 1 µg human BNP

### RELATED PRODUCTS:

- Human BNP (Cat # 4875-1000)

**FOR RESEARCH USE ONLY! Not to be used on humans.**