

JMJD2b Antibody

ALTERNATE NAMES: JHDM3b, KDM4b

CATALOG #: 6852-50

AMOUNT: 50 µl

HOST/ISOTYPE: Rabbit

IMMUNOGEN: Polyclonal antibody raised in rabbit against human JMJD2b (Jumonji Domain containing 2b), using a KLH-conjugated synthetic peptide containing an amino acid sequence from the central part of the protein.

FORM: Liquid

FORMULATION: In PBS with 0.05% (W/V) sodium azide.

PURIFICATION: Whole antiserum from rabbit

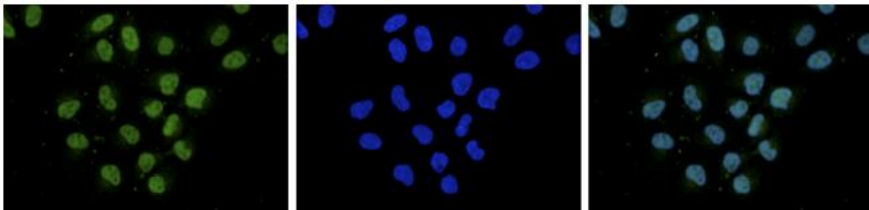
SPECIES REACTIVITY: Human

STORAGE CONDITIONS: Store at -20°C; for long storage, store at -80°C. Avoid multiple freeze-thaw cycles.

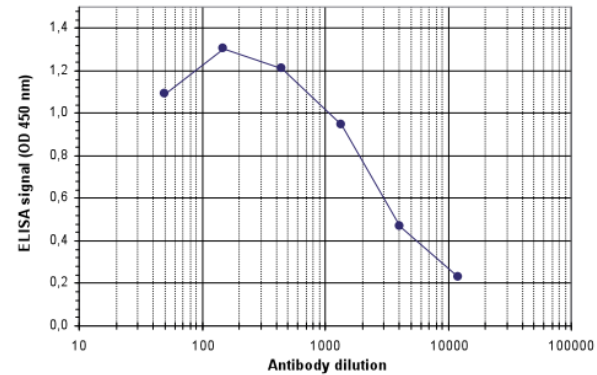
DESCRIPTION: JMJD2b belongs to the JMJD2 family of histone demethylases which play an important role in the establishment of the histone code. JMJD2b specifically demethylates the trimethylated K9 of histone H3. It is not able to demethylate K4, K27 and K36 of histone H3, nor K20 of histone H4.

APPLICATION: Western Blot: 1:1000, ELISA: 1:200, IF: 1:200.

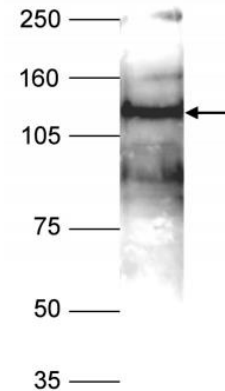
Note: This information is only intended as a guide. The optimal dilutions must be determined by the user.



HeLa cells were stained with the antibody and with DAPI. The cells were immunofluorescently labelled with the JMJD2b antibody (left) diluted 1:200 in blocking solution followed by an anti-rabbit antibody conjugated to Alexa488. The middle panel shows staining of the nuclei with DAPI. A merge of the two stainings is shown on the right.



To determine the titer, an ELISA was performed using a serial dilution of the antibody. The wells were coated with the peptide used for immunization of the rabbit. By plotting the absorbance against the antibody dilution, the titer of the antibody was estimated to be 1:3,000.



Nuclear extracts of HeLa cells were analyzed with the antibody diluted 1:1,000 in TBS-Tween containing 5% skimmed milk (Figure 2). The molecular weight marker (in kDa) is shown on the left; the location of the protein of interest is indicated on the right.

RELATED PRODUCTS:

- JMJD1A Antibody (Cat. No. 3273-100)
- JMJD1C Antibody (Cat. No. 3439-100)
- JMJD2A Polyclonal Antibody (Cat. No. 6108-50)
- JMJD2A Antibody (Cat. No. 6851-25)
- JMJD2C Antibody (Cat. No. 6853-50)
- JMJD6 Antibody (Cat. No. 6109-100)
- JMJD2A (888-1023 aa), Human recombinant (Cat. No. 7678-20, -50)
- JMJD6 (2-403 aa), Human recombinant (Cat. No. 7679-20, -50)

FOR RESEARCH USE ONLY! Not to be used on humans.