

# Set9 Antibody

**ALTERNATE NAMES:** SET7, SET7/9, KMT7, H3-K4-HMTase

**CATALOG #:** 6841-25

**AMOUNT:** 25 µg

**HOST/ISOTYPE:** Rabbit

**IMMUNOGEN:** Polyclonal antibody raised in rabbit against human Set9 (SET domain containing (lysine methyltransferase) 9), using a recombinant protein.

**FORM:** Liquid

**FORMULATION:** In PBS with 0.05% (W/V) sodium azide and 0.05% ProClin 300.

**PURIFICATION:** Protein G purified

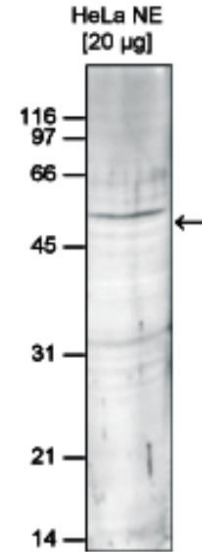
**SPECIES REACTIVITY:** Human.

**STORAGE CONDITIONS:** Store at -20°C; for long storage, store at -80°C. Avoid multiple freeze-thaw cycles.

**DESCRIPTION:** Set9 is a histone methyltransferase which specifically methylates lysine 4 of histone H3 being a specific tag for epigenetic transcriptional activation. Further, methylation of histone H3K4 by Set9 precludes deacetylation of H3 by the NuRD complex and impairs Suv39h1-mediated methylation of H3K9. Set9 also methylates the tumor suppressor p53 at lysine 372, thereby enhancing its stability. It contains a SET domain but lacks the pre- and post-SET domains).

**APPLICATION:** Western Blot: 1:1000.

**Note:** This information is only intended as a guide. The optimal dilutions must be determined by the user.



HeLa nuclear extracts (HeLa NE, 20 µg) were analysed by Western blot using the antibody diluted 1:1,000 in TBS-Tween containing 5% skimmed milk. A molecular weight marker (in kDa) is shown on the left; the location of the protein of interest is indicated on the right.

**RELATED PRODUCTS:**

- SETD3 Antibody (Cat # 3197-200)
- SETDB1 Antibody (Cat # 6155-100)
- SetD1a Antibody (Cat # 6842-50)
- SetD1b Antibody (Cat # 6843-50)
- SetD8 Antibody (Cat # 6844-25)

**FOR RESEARCH USE ONLY! Not to be used on humans.**