

BACE2C Antibody (CT)

ALTERNATE NAMES: BACE2; AEPLC; ALP56; ASP21; Beta-secretase 2; Aspartic-like protease 56 kDa; Aspartyl protease 1; Beta-site amyloid precursor protein cleaving enzyme 2; Down region aspartic protease; Memapsin-1; Membrane-associated aspartic protease 1; Theta-secretase

CATALOG #: 6723-100

AMOUNT: 100 µl

HOST/ISOTYPE: Rabbit IgG

IMMUNOGEN: This BACE2C antibody is generated from rabbits immunized with a KLH conjugated synthetic peptide between 310-339 amino acids from the C-terminal region of human BACE2C.

PURIFICATION: This antibody is prepared by Saturated Ammonium Sulfate (SAS) precipitation followed by dialysis against PBS.

MOLECULAR WEIGHT: ~56.1 kDa

FORM: Liquid

FORMULATION: Supplied in PBS with 0.09% (W/V) sodium azide.

SPECIES REACTIVITY: Human.

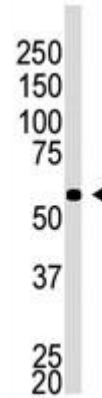
STORAGE CONDITIONS: Maintain refrigerated at 2-8°C for up to 6 months. For long term storage, store at -20°C in small aliquots to prevent freeze-thaw cycles.

DESCRIPTION: Accumulation of the amyloid-beta (Abeta) plaque in the cerebral cortex is a critical event in the pathogenesis of Alzheimer's disease. Abeta peptide is generated by proteolytic cleavage of the beta-amyloid protein precursor (APP) at beta- and gamma-sites by proteases. The long-sought beta-secretase was recently identified by several groups independently and designated beta-site APP cleaving enzyme (BACE) and aspartyl protease 2 (Asp2). A BACE homolog was recently cloned and designated BACE2, Asp1, DRAP (for Down region aspartic protease), and memapsin 1. BACE2 also cleaves APP at beta-site and at a different site within Abeta. BACE2 locates on chromosome 21q22.3, the so-called 'Down critical region', suggesting that BACE2 and Abeta may also contribute to the pathogenesis of Down syndrome.

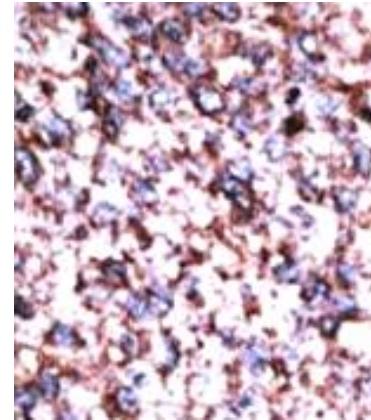
APPLICATION: Western blot: ~1:1000, IHC: ~1:50-1:100.

Note: This information is only intended as a guide. The optimal dilutions must be determined by the user.

FOR RESEARCH USE ONLY! Not to be used on humans.



The anti-BACE2C C-term Pab (Cat. # 6723-100) is used in Western blot to detect BACE2C in A549 cell lysate.



Formalin-fixed and paraffin-embedded human cancer tissue reacted with APOF antibody (Cat # 6723-100), which was peroxidase-conjugated to the secondary antibody, followed by DAB staining. This data demonstrates the use of this antibody for immunohistochemistry; clinical relevance has not been evaluated.

RELATED PRODUCTS:

- Active Recombinant Human beta-Secretase 1 - BACE-1 (Cat. No. 7609-5, -50, -1000)
- BACE Antibody (CT) (Cat. No. 5051-100)
- BACE2 Antibody (CT) (Cat. No. 5047-100)
- BACE2 Antibody (NT) (Cat. No. 5046-100)
- Secretase-beta, human recombinant (Cat. No. 7604-20, -100, -1000)
- Human CellExp™ BACE1, human recombinant (Cat. No. 7404-10, -50)
- Human CellExp™ BACE1, human recombinant (Native) (Cat. No. 7398-10, -50)