

# TDP1 Antibody (Clone AT1F2)

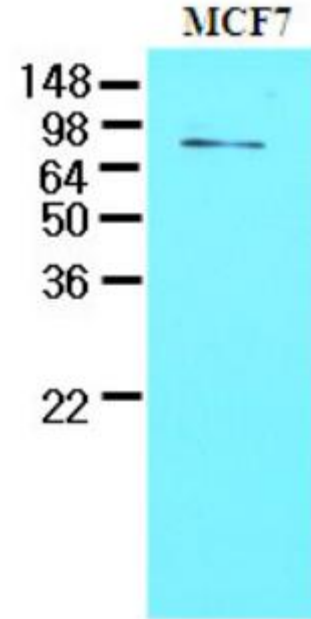
|                            |   |
|----------------------------|---|
| <b>ALTERNATE NAMES:</b>    | Tyrosyl-DNA phosphodiesterase 1, TDP1 protein, TDP1.  |
| <b>CATALOG #:</b>          | 6698-50   |
| <b>AMOUNT:</b>             | 50 µl   |
| <b>HOST/ISOTYPE:</b>       | Mouse IgG2b and IgGk  |
| <b>IMMUNOGEN:</b>          | Recombinant human TDP1 (1-298aa) purified from E. Coli. Anti-human TDP1 mAb, clone AT1F2, is derived from hybridization of mouse F0 myeloma cells with spleen cells from BALB/c mice immunized with a recombinant human TDP1 protein. |
| <b>PURIFICATION:</b>       | By protein-G affinity chromatography.   |
| <b>MOLECULAR WEIGHT:</b>   | ~70.00 kDa  |
| <b>FORM:</b>               | Liquid  |
| <b>FORMULATION:</b>        | Supplied in PBS with 0.1% sodium azide.   |
| <b>SPECIES REACTIVITY:</b> | Human.  |
| <b>STORAGE CONDITIONS:</b> | Maintain refrigerated at 2-8°C for up to 6 months. For long term storage, store at -20°C in small aliquots to prevent freeze-thaw cycles.   |

**DESCRIPTION:** Tyrosyl-DNA phosphodiesterase (TDP1) is a DNA repair enzyme that catalyzes the hydrolysis of a phosphodiester bond between a tyrosine residue and a DNA 3' phosphate. This protein is a member of the phospholipase D (PLD) superfamily and contains two PLD phosphodiesterase domains. Mutations in TDP1 are associated with the disease spino-cerebellar ataxia with axonal neuropathy (SCAN1) by interfering with DNA transcription or by inducing apoptosis in postmitotic neurons.

**APPLICATION:** Western blot: ~1:1000 - 2000, ELISA.

**Note:** This information is only intended as a guide. The optimal dilutions must be determined by the user.

**FOR RESEARCH USE ONLY! Not to be used on humans.**



Cell lysates of MCF7 (30ug) were resolved by SDS-PAGE, transferred to NC membrane and probed with anti-human TDP1 (1:1000). Proteins were visualized using a goat anti-mouse secondary antibody conjugated to HRP and an ECL detection system.

## RELATED PRODUCTS:

- TDP2 Antibody (Cat # 6697-50)