

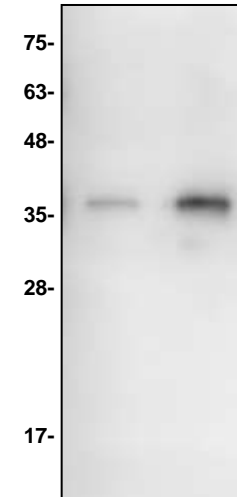
# Procathepsin K Antibody

<b>CATALOG NO:</b>	6667 -30T      30 µg (Trial size) 6667-100      100 µg
<b>ALTERNATE NAMES:</b>	CTSK, CTSO, CTSO3
<b>CONCENTRATION:</b>	0.5 mg/ml
<b>HOST:</b>	Rabbit
<b>IMMUNOGEN:</b>	Recombinant mouse Procathepsin K protein (Cat # 1027)
<b>INTERNAL ID:</b>	BV-N69-70
<b>PURIFICATION:</b>	Affinity purified rabbit IgG
<b>FORM:</b>	Liquid
<b>FORMULATION:</b>	0.5 mg/ml of antibody in PBS pH7.2, 0.01 % BSA, 0.01 % thimerosal and 50 % glycerol
<b>SPECIES REACTIVITY:</b>	Mouse
<b>STORAGE CONDITIONS:</b>	Store at -20°C. Avoid repeated freeze/thaw cycles.

**DESCRIPTION:** Cathepsin K is a member of the papain cysteine proteinase family and has been identified as the predominant proteinase responsible for the resorption of the bone matrix. The enzyme cleaves proteins such as collagen type I, collagen type II and osteonectin and therefore plays a role in bone remodeling and resorption in diseases such as osteoporosis, osteolytic bone metastasis and rheumatoid arthritis (Bromme and Okamoto, 1995; Drake, F. et al 1996; Bossard et al, 1996).

**APPLICATION:** Western blot: 1-4 µg

**Note:** This information is only intended as a guide. The optimal dilutions must be determined by the user.



## Western blot of Mouse Procathepsin K antibody;

Lane 1: Recombinant mouse Procathepsin K - 2 ng.  
Lane 2: Recombinant mouse Procathepsin K - 10 ng

## RELATED PRODUCTS:

- Procathepsin K, mouse recombinant (**Cat. No. 1027-10, 50, -1000**)
- Cathepsin K activity assay kit (**Cat. No. K141-100**)
- Cathepsin K Antibody (**Cat. No. 3368-100, 3588-100**)
- Cathepsin K Antibody (**Cat. No. 3368BP-50, 3588BP-50**)
- Cathepsin K Antibody (**Cat # 3368-100**)
- Cathepsin K Blocking Peptide (**Cat # 3368BP-50**)
- Cathepsin K Antibody (**Cat # 3588-100**)
- Cathepsin K Blocking Peptide (**Cat # 3588BP-50**)

**FOR RESEARCH USE ONLY! Not to be used on humans.**