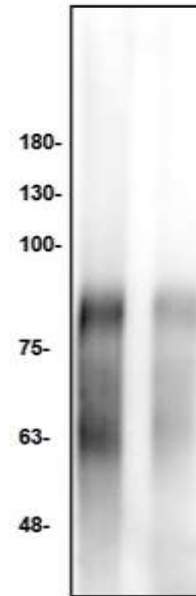


## Adenosine Antibody

<b>CATALOG NO:</b>	6652-30T      30 µg (Trial size) 6652-100      100 µg
<b>ALTERNATE NAMES:</b>	Acide 5'-adénylique, Adenine Nucleoside, Adénine Nucléoside, Adenine Riboside, Adénine Riboside, Adenosina.
<b>CONCENTRATION:</b>	1 mg/ml
<b>IMMUNOGEN:</b>	This antibody is generated from rabbits immunized with a BSA conjugated Adenosine
<b>INTERNAL ID:</b>	BV-N13-14
<b>HOST/ISOTYPE:</b>	Rabbit IgG
<b>SPECIES REACTIVITY:</b>	Adenosine and N6-Methyladenosine in wide species of mammals.
<b>PURIFICATION:</b>	This antibody is purified through a protein A column, followed by immunogen affinity purification.
<b>FORMULATION:</b>	Supplied in PBS (prepared using DEPC-treated water) with 0.03% ProClin®
<b>STORAGE CONDITIONS:</b>	Maintain refrigerated at 2-8°C for up to 6 months. For long term storage, store at -20°C in small aliquots to prevent freeze-thaw cycles.
<b>DESCRIPTION:</b>	Adenosine (ADO) is a purine nucleoside comprising a molecule of adenine attached to the ribose sugar molecule (ribofuranose) moiety via a $\beta$ -N <sub>9</sub> -glycosidic bond. Adenosine plays an important role in biochemical processes, such as energy transfer as adenosine triphosphate (ATP) and adenosine diphosphate (ADP), as well as in signal transduction as cyclic adenosine monophosphate, cAMP. It is also an inhibitory neurotransmitter, believed to play a role in promoting sleep and suppressing arousal.
<b>APPLICATION:</b>	Western blot: 1-4 µg/ml. Dot Blot, Chromatin Immunoprecipitation (ChIP), RNA Binding Protein Immunoprecipitation (RIP)
	<b>Note: This information is only intended as a guide. The optimal dilutions must be determined by the user.</b>



### Western blot analysis by anti-Adenosine

Lane 1: N6-Methyladenosine conjugated with BSA - 2 ng  
Lane 2: Adenosine conjugated with BSA - 3 ng

### RELATED PRODUCTS:

- N6-Methyladenosine Antibody (**Cat. No. 6653-100**)
- Guanosine Antibody (**Cat. No. 6654-100**)
- 7-Methylguanosine antibody (**Cat. No. 6655-100**)
- cAMP Antibody (**Cat. No. 3567-100**)
- 8-Br-cAMP (**Cat. No. 1837-5, -25**)
- cAMP Direct Immunoassay Kit (Colorimetric) (**Cat. No. K371-100**)
- ATP Colorimetric/Fluorometric Assay Kit (**Cat. No. K354-100**)
- ADP Colorimetric/Fluorometric Assay Kit (**Cat. No. K355-100**)
- ApoSENSOR™ ADP/ATP Ratio Bioluminescence Assay Kit (**Cat. No. K255-100**)
- ApoSENSOR™ ATP Cell Viability Bioluminescence Assay Kit (**Cat. No. K254-200**)
- ATP Solution (100 mM) (**Cat. No. 2121-100**)
- 8-Br-cGMP (**Cat. No. 1838-5, -25**)
- cGMP Antibody (**Cat. No. 3568-100**)
- cGMP Direct Immunoassay Kit (Colorimetric) (**Cat. No. K372-100**)

**FOR RESEARCH USE ONLY! Not to be used on humans.**