

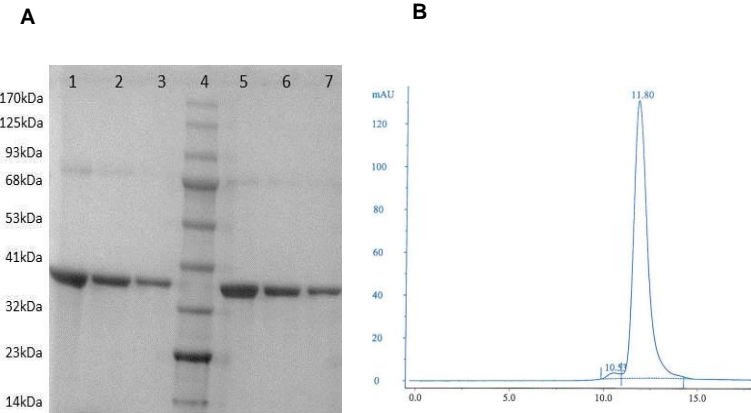
# Recombinant Protein A

<b>CATALOG #:</b>	6500B-10	10 mg
	6500B-25	25 mg
	6500B-100	100 mg
	6500B-1000	1 g
<b>SOURCE:</b>	<i>E. coli</i>	
<b>SEQUENCE:</b>	Amino acid 32-327 of the <i>Staphylococcus aureus</i> subsp. <i>aureus</i> . Protein A Ig binding domains with 6x His-tag on N-terminus. Gene Bank Accession Number YP_498670.	
<b>PURITY:</b>	>97% by SDS-PAGE and HPLC analyses	
<b>MOL. WEIGHT:</b>	35.5 kDa (Apparent M.W. 79 kDa (SEC))	
<b>THEORETICAL PI:</b>	5.56	
<b>EXTINCTION COEFFICIENT:</b>	7450 (at 280 nm)	
<b>FORM:</b>	Lyophilized	
<b>RECONSTITUTION:</b>	Reconstitute in water	
<b>STORAGE CONDITIONS:</b>	-20°C or below. Stable, as supplied, for at least 1 year.	
<b>hIgG BINDING:</b>	>95%	
<b>BIOBURDEN:</b>	No organisms detected	

**APPLICATION:**

The recombinant Protein A is a genetically engineered protein containing five Ig-binding regions of protein A and 6x His-tag on N-terminus. Cell wall binding region, albumin binding region and other non-specific binding regions have been eliminated from the recombinant Protein A to ensure the maximum specific IgG binding. The 6x His-tag can be used for affinity purification or for protein A detection using anti-His-tag antibody. The recombinant Protein A is ideal for purification of polyclonal or monoclonal IgG antibodies.

Protein A binds to most human and mouse IgG subclasses (e.g., human IgG1, IgG2, IgG4; mouse IgG1, IgG2a, IgG2b, IgG3). It also binds to total IgG from cow, guinea pig, hamster, horse, pig, and rabbit. Protein A has little affinity to chicken, goat, rat and sheep.



**A: SDS-PAGE (4-20%) of Recombinant Protein A.** Lane 1-3: 5, 2.5, and 1 µg, Protein A under Reducing conditions, Lane4: protein Ladder; Lane5-7: 5, 2.5, and 1 µg of Protein A under Non-Reducing conditions. **B: SEC chromatography of Protein A.** The apparent molecular weight is ~ 70 KDa Calculated Based on SEC standard curve (data not shown)

**RELATED PRODUCTS:**

- Protein A (Lyophilized) (Cat. No. 6500B-10, -25, -100, -1000)
- Protein A-Agarose (Cat. No. 6526-1, -5, -25, -100)
- Hi-Bind™ Protein A-Agarose (Cat. No. 6520-1, -5, -25, -100)
- Protein A-Sepharose (Cat. No. 6501-1, -5, -25, -100)
- Hi-Bind™ Protein G-Agarose (Cat. No. 6513-1, -5, -25, -100)
- Protein G-Sepharose (Cat. No. 6511-1, -5, -25, -100)
- Protein A/G-Sepharose (Cat. No. 6503-1, -5, -25, -100)
- Protein A/G/L-Sepharose (Cat. No. 6541-1, -5, -25, -100)
- Protein A/G/L (Cat. No. 6540-1, -25, -100, -1000)

**FOR RESEARCH USE ONLY! Not to be used on humans.**