

## IL-28A, Human CellExp™, human recombinant

<b>CATALOG #:</b>	6471-10	10 µg
	6471-50	50 µg
<b>ALTERNATE NAMES:</b>	Interleukin-28A, IL-28A, IFN-Lambda 2, Interferon-Lambda 2, Cytokine ZCYTO20, IL28A, IFNL2, ZCYTO20.	
<b>SOURCE:</b>	Human 293 Cell Expressed	
<b>PURITY:</b>	> 95% by SDS - PAGE	
<b>MOL. WEIGHT:</b>	24 kDa, monomer, non-glycosylated	
<b>ENDOTOXIN LEVEL:</b>	< 1.0 EU per 1 µg of protein	
<b>FORMULATION:</b>	Lyophilized in PBS.	
<b>RECONSTITUTION:</b>	Reconstitute in sterile PBS containing 0.1% endotoxin-free recombinant human serum albumin.	
<b>STORAGE CONDITIONS:</b>	Aliquot and store at -20°C or -70°C. Avoid repeated freezing and thawing cycles.	

**ADVANTAGES:**

- Animal-derived product free
- High Activity
- Authentic Glycosylation

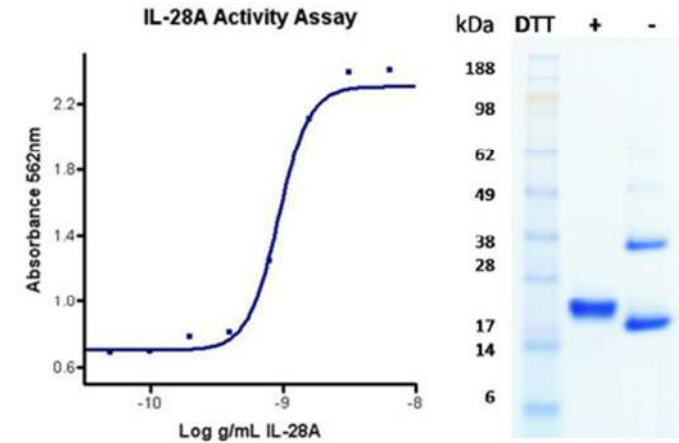
**DESCRIPTION:**

IL-28A is distantly related to type I interferons and the IL-10 family. Expression of IL-28A is induced by viral infection which interacts with a heterodimeric class II cytokine receptor that consists of interleukin 10 receptor, beta (IL10RB) and interleukin 28 receptor, alpha. IL-28A exhibits common features with type I IFNs such as antiviral activity, antiproliferative activity and in vivo antitumor activity. They act similarly to IFNs, but are less effective generally and have activity in a more limited range of cell lines. IL-28A induces ELR (-) CXC chemokine mRNA in human peripheral blood mononuclear cells, in an IFN-gamma-independent manner. It is able to generate tolerogenic DCs, an activity that could thwart IFN-beta functions. IL-28A produced in response to viral infection, activates both monocytes and macrophages

Producing a restricted panel of cytokines and therefore is an important factor in activating innate immune responses at the site of viral infection.

**BIOLOGICAL ACTIVITY:**

ED<sub>50</sub> is typically 0.5 to 5 ng/mL. The specific activity was determined by the dose-dependent protection of the cytopathic effect on A549 cells (human lung adenocarcinoma epithelial cell line) that were challenged with encephalomyocarditis (EMC) virus.



Human Cell<sup>exp</sup> Human Recombinant IL-28A

**RELATED PRODUCTS:**

- Human Cell<sup>exp</sup> Human Recombinant IL-28B (Cat # 6472-10, -50)
- IL-28, human recombinant (Cat # 4978-20, -1000)

**FOR RESEARCH USE ONLY! Not to be used in humans.**