

IL-23, Human CellExp™, human recombinant

CATALOG #: 6470-10 10 µg
6470-50 50 µg

ALTERNATE NAMES: Interleukin 23 alpha subunit p19, Interleukin-12 subunit beta p40, SGRF, IL23P19, IL-23-A, interleukin-six, G-CSF related factor, JKA3 induced upon T-cell activation, interleukin 12B (natural killer cell stimulatory factor 2 cytotoxic lymphocyte maturation factor 2 p40), NK cell stimulatory factor chain 2, Cytotoxic lymphocyte maturation factor 40 kDa subunit, CLMF2, CLMF p40.

SOURCE: Human 293 Cell Expressed

PURITY: > 95% by SDS - PAGE

MOL. WEIGHT: 55 kDa, heterodimer, glycosylated

ENDOTOXIN LEVEL: < 1.0 EU per 1 µg of protein

FORMULATION: Lyophilized in PBS.

RECONSTITUTION: Reconstitute in sterile PBS containing 0.1% endotoxin-free recombinant human serum albumin.

STORAGE CONDITIONS: Aliquot and store at -20°C or -70°C. Avoid repeated freezing and thawing cycles.

ADVANTAGES:

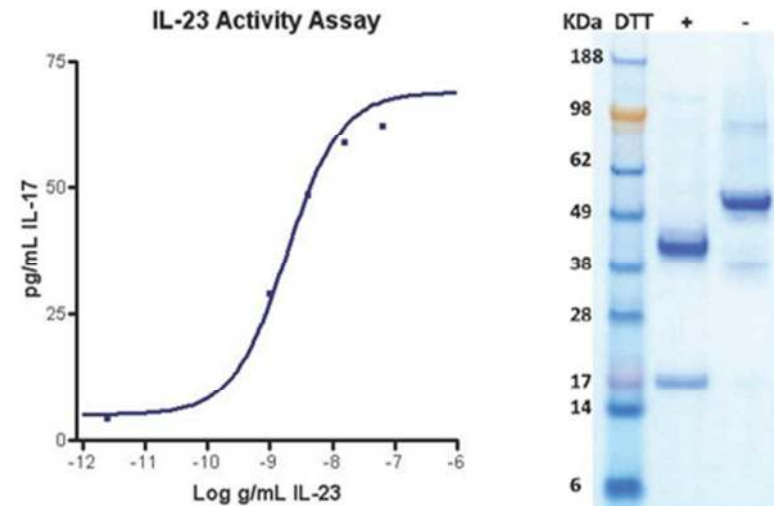
- Animal-derived product free
- High Activity
- Authentic Glycosylation

DESCRIPTION:

IL23 is composed of a subunit of the heterodimeric cytokine IL23 and the p40 subunit of interleukin 12 (IL12B). Interleukin-23 (IL-23) belongs to the IL-12 family and is produced by antigen presenting cells. IL-23 using IL12RB1 and IL-23R (specific for IL-23) can activate STAT and NF-kB pathways and stimulate the production of interferon-gamma. IL-23 is known to take a vital part in the inflammation process and is associated with auto immune diseases. However, unlike IL12, which acts primarily on naive CD4(+) T cells, IL23 preferentially acts on memory CD4(+) T cells.

BIOLOGICAL ACTIVITY:

ED₅₀ is typically 2 to 20 ng/mL. The specific activity was determined by the dose-dependent secretion of h-IFN-gamma from human PBMC.



Human Cell^{exp} Human Recombinant IL-23

RELATED PRODUCTS:

- IL-12, human recombinant (Cat # 4161-10, -100)
- IL-12, murine recombinant (Cat # 4119-10, -100)
- IL-12, rat recombinant (Cat # 4163-10, -100)
- IL-12p40, human recombinant (Cat # 4732-10, -50 -1000)
- IL-12 Antibody (Cat # 5162-200)
- IL-12p40 Antibody (Cat # 5732-100)

FOR RESEARCH USE ONLY! Not to be used in humans.