

## IL-1 beta, Human CellExp™, human recombinant

<b>CATALOG #:</b>	6460-10	10 µg
	6460-50	50 µg
<b>ALTERNATE NAMES:</b>	Catabolin, Lymphocyte-activating factor (LAF), Endogenous Pyrogen (EP), Leukocyte Endogenous Mediator (LEM), Mononuclear Cell Factor (MCF), IL1F2, IL-1 beta.	
<b>SOURCE:</b>	Human 293 Cell Expressed	
<b>PURITY:</b>	> 95% by SDS - PAGE	
<b>MOL. WEIGHT:</b>	18 and 25 kDa, monomer, glycosylated	
<b>ENDOTOXIN LEVEL:</b>	< 1.0 EU per 1 µg of protein	
<b>FORMULATION:</b>	Lyophilized from a PBS solution.	
<b>RECONSTITUTION:</b>	Reconstitute in sterile PBS containing 0.1% endotoxin-free recombinant human serum albumin.	
<b>STORAGE CONDITIONS:</b>	Aliquot and store at -20°C or -70°C. Avoid repeated freezing and thawing cycles.	

**ADVANTAGES:**

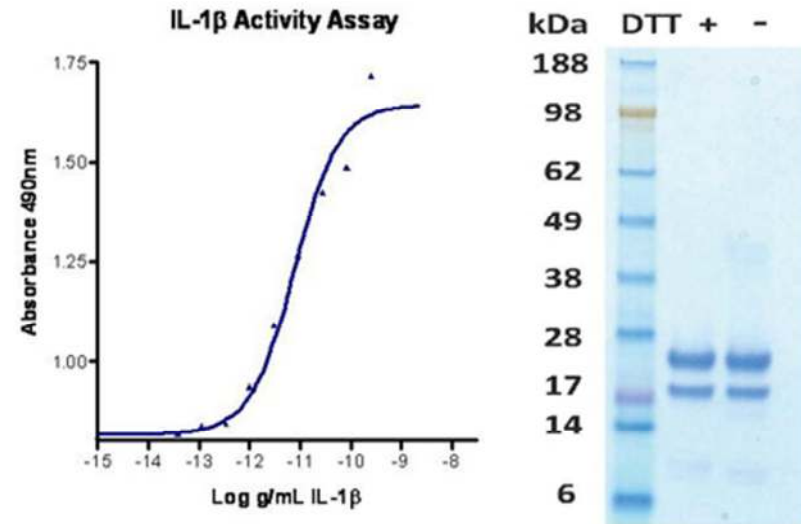
- Animal-derived product free
- High Activity
- Authentic Glycosylation

**DESCRIPTION:**

Interleukin-1beta is produced by activated macrophages. IL-1beta stimulates thymocyte proliferation by inducing IL-2 release, B-cell maturation and proliferation, and fibroblast growth factor activity. IL1beta proteins are involved in the inflammatory response, being identified as endogenous pyrogens, and are reported to stimulate the release of prostaglandin and collagenase from synovial cells. In comparison with the E. coli expressed protein, IL-1 beta is 50% more potent in promoting human CD4+ T cell differentiation into Th17 cells. This cytokine is produced in a serumfree, chemically defined media.

**BIOLOGICAL ACTIVITY:**

ED<sub>50</sub> is typically 0.02 to 0.08 ng/mL. The specific activity was determined by the dose-dependent stimulation of the proliferation of mouse D10S cells.



Human Cell<sup>exp</sup> Human Recombinant IL-1β

**RELATED PRODUCTS:**

- IL-1alpha, human recombinant (Cat # 4125-10)
- IL-1alpha, murine recombinant (Cat # 4126-10)
- IL-1alpha, rat recombinant (Cat # 4127-10)
- IL-1beta, human recombinant (Cat # 4128-10)
- IL-1beta, murine recombinant (Cat # 4129-10)
- IL-1beta, rat recombinant (Cat # 4127-10)
- IL-1beta, rat recombinant (Cat # 4130-50)
- IL-1RA, human recombinant (Cat # 4263-20)
- IL-1RA, murine recombinant (Cat # 4264-20)
- IL-1alpha Antibody (Cat # 5125-100)
- IL-1beta Antibody (Cat # 5128-100)

**FOR RESEARCH USE ONLY! Not to be used in humans.**