

HGH, Human CellExp™, human recombinant

CATALOG #:	6457-10	10 µg
	6457-50	50 µg
ALTERNATE NAMES:	Human Growth Hormone, GH1, GH, GHN, GH-N, hGH-N, Pituitary growth hormone, Growth hormone 1, Somatotropin.	
SOURCE:	Human 293 Cell Expressed	
PURITY:	> 95% by SDS - PAGE	
MOL. WEIGHT:	22 kDa, monomer, non-glycosylated	
ENDOTOXIN LEVEL:	< 1.0 EU per 1 µg of protein	
FORMULATION:	Lyophilized from a TBS solution.	
RECONSTITUTION:	Reconstitute in sterile PBS containing 0.1% endotoxin-free recombinant human serum albumin.	

STORAGE CONDITIONS:

Aliquot and store at -20°C or -70°C. Avoid repeated freezing and thawing cycles.

ADVANTAGES:

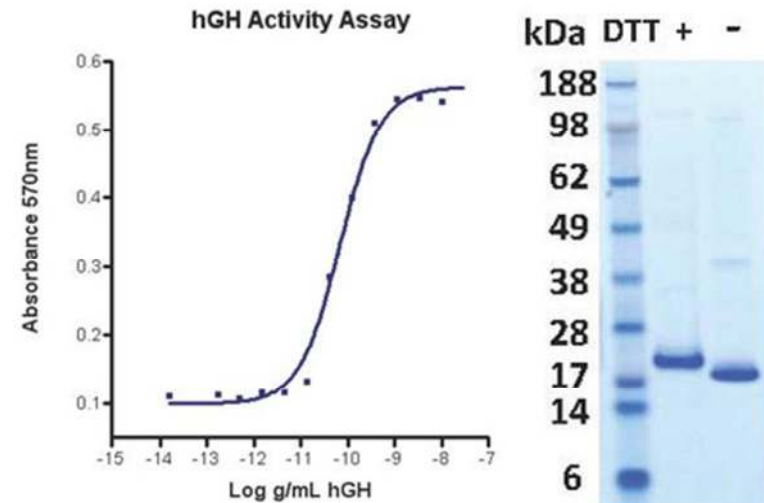
- Animal-derived product free
- High Activity
- Authentic Glycosylation

DESCRIPTION:

HGH is a member of the somatotropin/prolactin family of hormones which play an important role in growth control. HGH can promote bone and cartilage growth as well as increase protein synthesis through liver somatomedin and tissue polypeptide growth factor, correct the post-traumatic state of negative nitrogen and hypoproteinemia induced by severe infection and cirrhosis; stimulate immunoglobulin synthesis, stimulate the proliferation of lymphoid tissue, macrophages and lymphocyte, and accelerate wound healing; promote myocardial protein synthesis, increase myocardial contractility and reduce myocardial oxygen consumption; regulating fat metabolism, reducing serum cholesterol, low - density lipoprotein level.

BIOLOGICAL ACTIVITY:

ED₅₀ is typically 0.4 to 2 ng/mL. The activity was determined by the dose-dependent stimulation of the proliferation of rat lymphoma line Nb2-11 cells (prolactin indicator cell line).



Human Cell^{exp} Human Recombinant HGH

RELATED PRODUCTS:

- Growth Hormone, human recombinant (Cat # 4769-100, -500, -1000, -5000)
- Growth Hormone, murine recombinant (Cat # 4770-50, -1000)
- Growth Hormone, chicken recombinant (Cat # 4771-50, -500)
- Growth Hormone Antibody (Cat # 5769-100)

FOR RESEARCH USE ONLY! Not to be used in humans.