

# Activin A, Human CellExp™, Human Recombinant

<b>CATALOG #:</b>	6442-10	10 µg
	6442-50	50 µg
<b>ALTERNATE NAMES:</b>	Inhba, Inhibin beta A, FSH releasing protein, FRP.	
<b>SOURCE:</b>	Human Cell Expressed	
<b>PURITY:</b>	> 95% by SDS - PAGE	
<b>MOL. WEIGHT:</b>	25 kDa, homodimer, nonglycosylated.	
<b>ENDOTOXIN LEVEL:</b>	< 1.0 EU per 1 µg of protein	
<b>FORMULATION:</b>	Lyophilized from a PBS solution.	
<b>RECONSTITUTION:</b>	Reconstitute in sterile PBS containing 0.1% endotoxin-free, recombinant human serum albumin.	

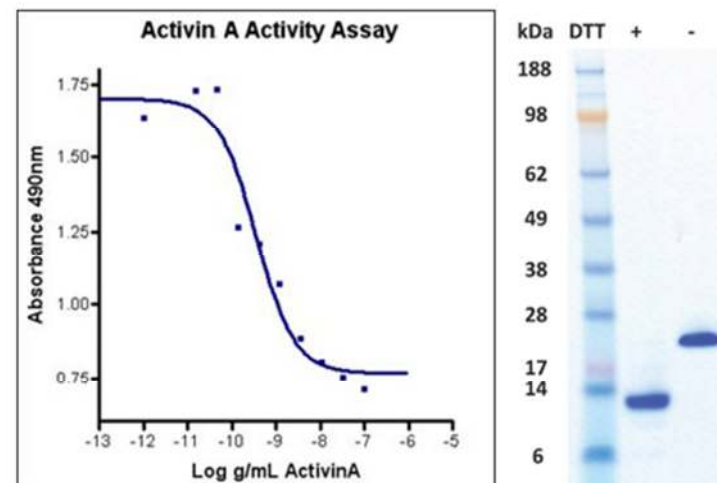
**STORAGE CONDITIONS:**  
Aliquot and store at -20°C or -70°C. Avoid repeated freezing and thawing cycles.

- ADVANTAGES:**
- Animal-derived product free
  - High Activity
  - Authentic Glycosylation

**DESCRIPTION:**  
Activins are homodimers or heterodimers of the different subunit isoforms, part of the TGF-β super-family. Activin displays an extensive variety of biological activities, including mesoderm induction, neural cell differentiation, bone remodelling, hematopoiesis, and reproductive physiology. Activins takes part in the production and regulation of hormones such as FSH, LH, GnRH and ACTH. Cells that are identified to express Activin A include fibroblasts, endothelial cells, hepatocytes, vascular smooth muscle cells, macrophages, keratinocytes, osteoclasts, bone marrow monocytes, prostatic epithelium, neurons, chondrocytes, osteoblasts, Leydig cells, Sertoli cells, and ovarian granulosa cells. BioVision's Activin A is produced in a serum-free, chemically defined media.

**BIOLOGICAL ACTIVITY:**

ED<sub>50</sub> is typically 0.5 to 5 ng/mL. The specific activity was determined by the dose-dependent inhibition of proliferation of the MPC-11 cell line (mouse plasmocytoma cell line).



Human Cell<sup>exp</sup> Human Recombinant Activin A

**RELATED PRODUCTS:**

- Activin A, human recombinant (Cat. No. 4724-10, -100, -1000)
- Activin A, mouse recombinant (Cat. No. 4725-10, -100, -1000)
- Activin A, rat recombinant (Cat. No. 4726-10, -100, -1000)
- TGF-beta1, human recombinant (Cat. No. 4342-5, -50, -500)
- TGF-beta2, human recombinant (Cat. No. 4340-5, -50, -500)
- TGF-beta3, human recombinant (Cat. No. 4344-5, -50, -500)
- TGF-beta1 Antibody (Cat. No. 5559-100)
- TGF-beta2 Antibody (Cat. No. 5340-100)
- TGF-beta2 Antibody (Cat. No. 5343R-100)
- TGF-beta3 Antibody (Cat. No. 5344R-100)
- Human Recombinant LEFTY-I (Cat # 4873-10, -50)

**FOR RESEARCH USE ONLY! Not to be used in humans.**