

Adiponectin Polyclonal Antibody

CATALOG #: 5901-50 50 µg
5901-250 250 µg

HOST: Rabbit

IMMUNOGEN:

E. coli expressed recombinant human adiponectin (Cat.# 4901-25; ID# BV-61-62)

FORMULATION:

0.5 mg/ml antigen affinity purified rabbit anti-adiponectin polyclonal antibody in phosphate buffered saline (PBS), pH 7.2, containing 30% glycerol, 0.5% BSA, 5 mM EDTA and 0.03% proclin.

SPECIES REACTIVITY: Human, mouse, rat

STORAGE CONDITIONS:

Store at -20°C. For long-term storage, aliquot and freeze at -70°C. Avoid repeated freeze/thaw cycles.

BACKGROUND:

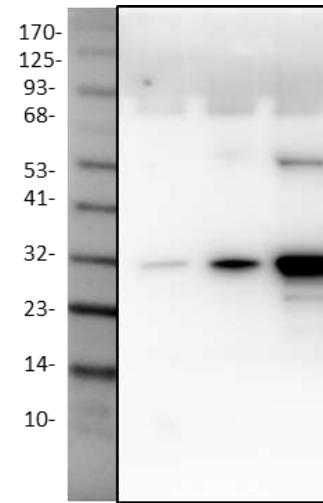
Adipocytes are highly active cells with potent autocrine, paracrine, and endocrine functions. Adiponectin is a serum protein produced and secreted exclusively by adipose tissues. Unlike insulin and leptin, adiponectin levels in plasma remain constant throughout the day and are not acutely affected by food intake.

APPLICATION AND USAGE:

The antibody can be used for Western blotting (0.5-2 µg/ml) and Immunoprecipitation (10-20 µg/ml). However, the optimal conditions should be determined individually. Recombinant human adiponectin (Cat.# 4901-25) can be used as a positive control.

SPECIFICITY:

The antibody detects the monomer (30 kDa), dimer (60 kDa), and multimers (90 kDa) of adiponectins in samples from human, mouse, and rat origins.



Western blot analysis of recombinant human adiponectin.

4901-25 Adiponectin 2 ng
4901-25 Adiponectin 10 ng
4901-25 Adiponectin 50 ng

RELATED PRODUCTS:

Apoptosis Detection Kits & Reagents

- Annexin V Kits & Bulk Reagents
- Caspase Assay Kits & Reagents
- Mitochondrial Apoptosis Kits & Reagents
- Nuclear Apoptosis Kits & Reagents
- Apoptosis Inducers and Set
- Apoptosis siRNA Vectors

Cell Fractionation System

- Mitochondria/Cytosol Fractionation Kit
- Nuclear/Cytosol Fractionation Kit
- Membrane Protein Extraction Kit
- Cytosol/Particulate Rapid Separation Kit
- Mammalian Cell Extraction Kit
- FractionPREP Fractionation System

Cell Proliferation & Senescence

- Quick Cell Proliferation Assay Kit
- Senescence Detection Kit
- High Throughput Apoptosis/Cell Viability Assay Kits
- LDH-Cytotoxicity Assay Kit
- Bioluminescence Cytotoxicity Assay Kit
- Live/Dead Cell Staining Kit

Cell Damage & Repair

FOR RESEARCH USE ONLY! Not to be used on humans.