

## BACE Antibody (CT)

<b>ALTERNATE NAMES:</b>	BACE (CT), Asp2
<b>CATALOG #:</b>	5051-100
<b>AMOUNT:</b>	100 µg
<b>HOST:</b>	Rabbit
<b>ISOTYPE:</b>	IgG1
<b>IMMUNOGEN:</b>	A peptide corresponding to 17 amino acids at the CT of human BACE.
<b>PURIFICATION:</b>	Ion exchange chromatography.
<b>FORMULATION:</b>	100 µg (1 mg/ml) in 1X PBS containing 0.02% sodium azide.
<b>SPECIES REACTIVITY:</b>	Human, mouse
<b>STORAGE CONDITIONS:</b>	Can be stored at 4°C for a year. For long term storage, store at -20°C. Avoid freeze/thaw cycles.

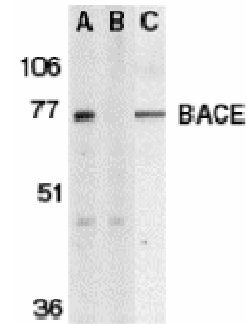
### DESCRIPTION:

Accumulation of the amyloid-beta (Abeta) plaque in the cerebral cortex is a critical event in the pathogenesis of Alzheimer's disease. Abeta peptide is generated by proteolytic cleavage of the beta-amyloid protein precursor (APP) at beta- and gamma-sites by two proteases. APP is first cleaved by beta-secretase, producing a soluble derivative of the protein and a membrane anchored 99-amino acid carboxy-terminal fragment (C99). The C99 fragment serves as substrate for gamma-secretase to generate the 4 kDa amyloid-beta peptide, which is deposited in the brains of all sufferers of Alzheimer's disease. The long-sought beta-secretase was recently identified by several groups independently and designated beta-site APP cleaving enzyme (BACE) and aspartyl protease 2 (Asp2). BACE/Asp2 is a novel transmembrane aspartic protease and colocalizes with APP.

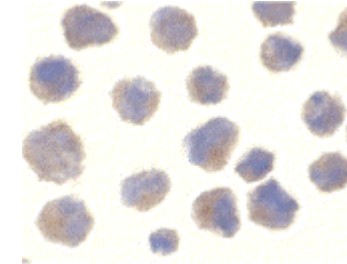
<b>SPECIFICITY:</b>	Recognizes the BACE C-terminus.
<b>APPLICATION:</b>	Immunocytochemistry: 10 µg/ml, Western Blot: 0.5 – 1 µg/ml; ELISA

**Note:** This information is only intended as a guide. The optimal dilutions must be determined by the user

**FOR RESEARCH USE ONLY! Not to be used on humans.**



Western blot analysis of BACE in human brain tissue lysate in the absence (A) or presence (B) of blocking peptide (2253P) and in mouse 3T3 cell lysate (C) with BACE antibody at 1 µg/ml.



Immunocytochemistry of BACE in 3T3 cells with BACE antibody at 10 µg/ml.

### RELATED PRODUCTS:

- Anti-Human Amyloid Beta 1-17 Antibody (Cat. No. 5006-100)
- Anti-Human Amyloid Beta 18-29 Antibody (Cat. No. 5007-100)
- ABAD/HADH2 Antibody (Cat. No. 3246-100)
- APP Antibody (Cat. No. 6001-100)
- ERAB/HCD2 Antibody (Cat. No. 3255-100)
- SAA1 monkey, recombinant (Cat. No. 4332-10, 1000)
- APP Antibody (NT) (Cat. No. 5044-100)
- APP Antibody (CT) (Cat. No. 5045-100)
- BACE 2 Antibody (CT) (Cat. No. 5047-100)
- BACE 2 Antibody (NT) (Cat. No. 5046-100)