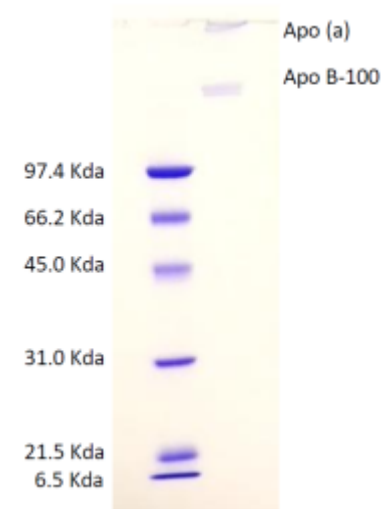


Lipoprotein a, [Lp(a)], Human Plasma

CATALOG NO:	4930-50
AMOUNT:	50 µg
MOLECULAR WT:	280,000-700,000
STORAGE:	2-4 °C. Do NOT Freeze.
FORM:	Liquid in PBS with 0.05% NaN ₃
DENSITY:	1.063-1.1 g/ml; Composition: 65% lipid, 27% protein, 8% carbohydrate
PURITY:	Essentially free of other plasma lipoproteins as determined by electrophoresis using Fat Red 7B staining for lipids and Coomassie Blue for proteins. Greater than 95% of total lipoprotein content by electrophoresis.(≥95% by SDS-PAGE)
SOURCE:	Prepared from fresh, non-frozen plasma shown to be non reactive for HBsAg, anti-HCV, anti-HBc, and negative for anti-HIV 1 & 2 by FDA approved tests.
DESCRIPTION:	In a normal fasting individual, Lp(a) concentrations range from 20-760 mg/L. Lp(a) levels are associated with premature atherosclerosis; thus elevated Lp(a) is considered a high risk factor for coronary heart disease.



SDS-PAGE of Lipoprotein

RELATED PRODUCTS:

- Lipoprotein, Human Plasma, Low Density (**Cat. No. 4931-1000**)
- Lipoprotein, Human Plasma, Intermediate Density (**Cat. No. 4932-1000**)
- Lipoprotein, Human Plasma, very low Density (**Cat. No. 4933-1000**)
- Lipoprotein, Human Plasma, High Density (**Cat. No. 4934-1000**)
- HDL and LDI/VLDL Assay Kit (**Cat. No. K613-100**)

FOR RESEARCH USE ONLY! Not to be used on humans.