

# ApoE3, human recombinant

<b>CATALOG #:</b>	4696-50	50 µg
	4696-100	100 µg
	4696-500	500 µg
	4696-1000	1 mg
	4696-5000	5 mg

**SOURCE:** *E. coli*

**PURITY:** >90% by SDS-PAGE and HPLC analyses  
Endotoxin level is <0.1 ng per µg of ApoE3.

**MOL. WEIGHT:** 34.0 kDa

**FORM:** Sterile filtered and lyophilized from dH<sub>2</sub>O

**RECONSTITUTION:**

Centrifuge the vial prior to opening. Reconstitute in dH<sub>2</sub>O to a concentration of 0.1-1.0 mg/ml. The solution can then be diluted into other aqueous buffers and store at 4°C for 1 week or -20°C for future use.

**STORAGE CONDITIONS:**

The lyophilized human ApoE3 is best-stored desiccated below 0°C. Reconstituted ApoE3 should be stored at working aliquots at -20°C.

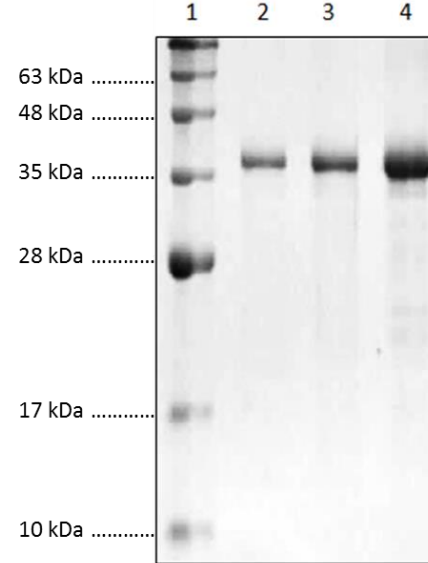
**DESCRIPTION:**

ApoE belongs to a group of proteins that bind reversibly with lipoprotein and play an important role in lipid metabolism. In addition to facilitating solubilization of lipids, these proteins help to maintain the structural integrity of lipoproteins, serve as ligands for lipoprotein receptors, and regulate the activity of enzymes involved in lipid metabolism. ApoE exists in three major isoforms; E2, E3, and E4, which differ from one another by a single amino-acid substitution. E3 is the most common isoform and is present in 40-90% of the population. Recombinant human ApoE3 is a 34.0 kDa protein containing 299 amino acid residues.

**ApoE3 AMINO ACID SEQUENCE:**

MKVEQAVETEPEPELRRQQTWQSGQRWELALGRFWDYLRWVQTLSEQVQEELLSSQVTQEL  
RALMDETMKELKAYKSELEEQLTPVAEETRARLSKELQAAQARLGADMEDVCGRLVQYRGEV  
QAMLGQSTEELRVRLASHLRKLRKLLRDADDLQKRLAVYQAGAREGAERGLSAIRERLGPLV  
EQGRVRAATVGLAGQPLQERAQAWGERLRARMEEMGSRTDRDLDEVKEQVAEVRKLEEQ  
AQQIRLQAEAFQARLKSWEPLVEDMQRQWAGLVEKVAAGVGTSAAPVPSDNH

**FOR RESEARCH USE ONLY! Not to be used on humans.**



SDS-PAGE (12%) of rh ApoE3

Lane 1: MW Markers  
Lane 2: rh APO E-3 (1.65 ug)  
Lane 3: rh APO E-3 (3.3 ug)  
Lane 4: rh APO E-3 (6.6 ug)

**RELATED PRODUCTS:**

- ApoA-1, human recombinant (Cat # 4693-20, -100, -1000)
- ApoA-1, rat recombinant (Cat # 4695-20, -100, -1000)
- Apo-D, human recombinant (Cat # 4326-10, -1000)
- APO-J / Clusterin (Cat. No. 4325-10, -500)
- Apo-SAA, human recombinant (Cat # 4324-50, -500, -1000)
- ApoE2, human recombinant (Cat # 4760-50, -100, -500, -1000, -5000)
- ApoE4, human recombinant (Cat # 4699-50, -100, -500, -1000, -5000)
- Apolipoprotein CI, Human Plasma (Cat # 4703-100)
- Apolipoprotein CII, Human Plasma (Cat # 4704-50)
- Apolipoprotein CIII, Human Plasma (Cat # 4706-100)