

SDF-1 α , Murine Recombinant

CATALOG #: 4388-10 10 μ g
4388-50 50 μ g
4388-1000 1 mg

SOURCE: *E. Coli*

PURITY: >99% by SDS-PAGE and HPLC analyses
Endotoxin level is <0.1 ng per μ g (1EU/ μ g).

MOL. WEIGHT: 8.3 kDa

FORM: Lyophilized from LAL water.

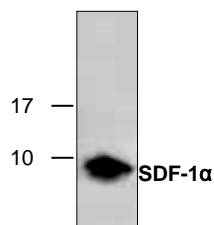
RECONSTITUTION: We recommend a quick spin followed by reconstitution in water to a concentration of 0.1-1.0 mg/ml. The solution can then be diluted into other aqueous buffers or stored at 4°C for 1 week or -20°C for future use.

STORAGE CONDITIONS: The lyophilized protein is best-stored desiccated below 0°C. Reconstituted SDF-1 α should be stored at working aliquots at -20°C.

BACKGROUND DESCRIPTION: Stromal Cell-Derived Factor-1 α (SDF-1 α) is a recently discovered protein belonging to the α -chemokine (C-X-C) family of cytokines. Recombinant murine SDF-1 α is a 8.3 kDa protein containing 68 amino acids residues.

BIOLOGICAL ACTIVITY: Determined by its ability to chemoattract human peripheral blood monocytes using a concentration range of 50-100 ng/ml.

AMINO ACID SEQUENCE: KPVLSYRCP CRFFESHIAR ANVKHLKILN TPNCALQIVA
RLKNNNRQVC IDPKLKWIQE YLEKALNK.



Cat. #: 4388
Purity of recombinant murine SDF-1 α (2 μ g) was analyzed by SDS-PAGE electrophoresis.

RELATED PRODUCTS:

- SDF-1 α , rat recombinant (**Cat # 7199-10, -50**)
- SDF-1 β , rat recombinant (**Cat # 7200-10, -50**)
- SDF-1 beta/CXCL12, feline recombinant (**Cat # 4389-10, -100, -1000**)
- SDF-1alpha (CXCL12), human recombinant (**Cat # 4387-10, -100, -1000**)
- SDF-1beta (CXCL12), human recombinant (**Cat # 4390-10, -100, -1000**)
- SDF-1beta (CXCL12), murine recombinant (**Cat # 4391-10, -100, -1000**)

FOR RESEARCH USE ONLY! Not to be used on humans.