

## Recombinant Human Stem Cell Factor (SCF)

<b>CATALOG #:</b>	4327-10	10 µg
	4327-50	50 µg
	4327-1000	1 mg
<b>SOURCE:</b>	<i>E. coli</i>	
<b>PURITY:</b>	>95% by SDS-PAGE	
<b>MOLECULAR WEIGHT:</b>	18.9 kDa (165 aa, 26-190)	
<b>ENDOTOXIN:</b>	<0.1 ng/µg of SCF.	
<b>FORM:</b>	Lyophilized	
<b>FORMULATION:</b>	Sterile Filtered lyophilized (freeze-dried) powder from 50 mM Tris, 100 mM NaCl, pH 8.0.	
<b>STORAGE CONDITIONS:</b>	Store at -70 °C. For long term storage it is recommend to add a carrier protein (0.1% HSA or BSA). Avoid freeze-thaw cycles.	
<b>RECONSTITUTION:</b>	Centrifuge the vial prior to opening. Reconstitute in water to a concentration of 0.1-1.0 µg/µl. The solution can then be diluted into other aqueous buffers and stored at -20°C for future use.	

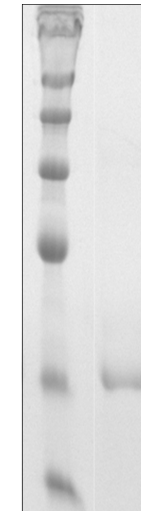
### DESCRIPTION:

Stem Cell Factor (SCF) is a hematopoietic growth factor that exerts its activity at the early stages of hematopoiesis. SCF stimulates the proliferation of myeloid, erythroid, and lymphoid progenitors in bone marrow cultures. Human SCF is an 18.4 kDa protein containing 165 amino acid residues.

### BIOLOGICAL ACTIVITY:

The ED<sub>50</sub> as determined by the dose-dependent stimulation of the proliferation of human TF-1 cells is ≤ 10 ng/ml.

**NOTE:** For Research Use Only! Not to be used in humans.



SDS-PAGE (15%) of purified human recombinant SCF protein.  
Lane 1: Marker  
Lane 2: 10 µg protein

### RELATED PRODUCTS:

- Human Cell<sup>exp</sup> Human Recombinant SCF (Cat # 6478-10, -50)
- SCF, human recombinant (Cat # 4327-10, -50, -1000)
- SCF, murine recombinant (Cat # 4328-10, -50, -1000)
- SCF, rat recombinant (Cat # 4329-10, -50, -1000)
- SCF Antibody (Cat # 5327-100)
- SCF Antibody (Cat # 5328-100)
- SCF Antibody (Cat # 5329R-100)