

Recombinant Human IL-1RA

CATALOG #:	4263-20	20 µg
	4263-100	100 µg
	4263-1000	1 mg
SYNONYMS:	IRAP, IL1F3, IL1RA, IL-1ra3, ICIL-1RA, IL1RN, IL1 inhibitor, IL-1ra, MGC10430	
SOURCE:	<i>E. coli</i>	
PURITY:	> 98 % by SDS-PAGE and RP-HPLC	
MOLECULAR WEIGHT:	17 kDa	
FORM:	Lyophilized without additives.	

RECONSTITUTION:

Centrifuge the vial prior to opening. Reconstitute in sterile ddH₂O to a concentration ≥ 100 µg/ml. This solution can then be diluted into other aqueous buffers.

STORAGE CONDITIONS:

The lyophilized protein is best-stored desiccated at -20°C. Reconstituted human IL-1RA should be stored at 4°C for 2-7 days and at -20°C for future use. For long term storage it is recommended to add a carrier protein (0.1 % HSA or BSA). Avoid freeze/thaw cycles.

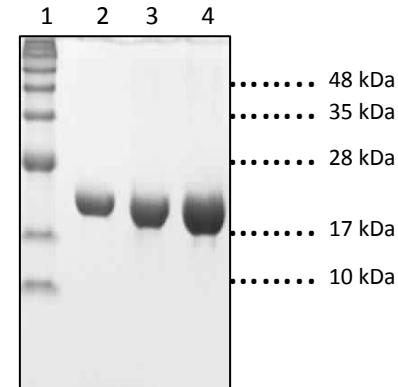
DESCRIPTION:

Interleukin-1 RA is a member of the interleukin 1 cytokine family. This protein inhibits the activities of interleukin 1-alpha (IL1A) and interleukin 1-beta (IL1B), and modulates a variety of interleukin 1 related immune and inflammatory responses. This gene and five other closely related cytokine genes form a gene cluster spanning approximately 400 kb on chromosome 2. A polymorphism of this gene is reported to be associated with increased risk of osteoporotic fractures and gastric cancer. Four alternatively spliced transcript variants encoding distinct isoforms have been reported. IL1RA Human Recombinant produced in E.Coli is a non-glycosylated, N-terminal methionyl form of the human naturally-occurring polypeptide chain containing 153 amino acids and having a molecular mass of 17 kDa. The IL1RA is purified by proprietary chromatographic techniques.

BIOLOGICAL ACTIVITY:

The ED₅₀ as determined by the dose-dependent inhibition of IL-1 stimulation of D10S cells was found to be 0.5 ng/ml.

FOR RESEARCH USE ONLY! Not to be used in humans.



Lane 1: MW Markers
Lane 2: rh IL-1 RA (2.8 ug)
Lane 3: rh IL-1 RA (5.5 ug)
Lane 4: rh IL-1 RA (10 ug)

SDS-PAGE (15%) of purified human recombinant IL-1RA

RELATED PRODUCTS:

- IL-1 alpha, human recombinant (Cat # 4125-10, -50, -1000)
- IL-1 alpha, murine recombinant (Cat # 4126-10, -50, -1000)
- IL-1 alpha, rat recombinant (Cat # 4127-10, -50, -1000)
- IL-1 beta, human recombinant (Cat # 4128-10, -50, -1000)
- IL-1 beta, murine recombinant (Cat # 4129-10, -50, -1000)
- IL-1 beta, rat recombinant (Cat # 4130-10, -50, -1000)
- IL-1 alpha Antibody (Cat # 5125-100)
- IL-1 alpha Antibody (Cat # 5126-100)
- IL-1 beta Antibody (Cat # 5128-100)
- IL-1 beta Antibody (Cat # 5128G-100)
- IL-1 beta Antibody (Cat # 5129-100)