

## Anti-TAB1 Antibody

**CATALOG NO:** 3682-100

**AMOUNT:** 100 µg

**HOST:** Rabbit

**IMMUNOGEN:** Recombinant full length protein of human TAB1

### FORMULATION:

Purified rabbit polyclonal antibody in 0.42% Potassium phosphate; 0.87% Sodium chloride, pH 7.3, 30% glycerol and 0.01% sodium azide.

**SPECIES REACTIVITY:** Human, Mouse, Rat

### STORAGE CONDITIONS:

Store at -20° C. Avoid repeated freeze/thaw cycles.

### BACKGROUND:

TAB1 (TAK1 binding protein 1) is an adaptor protein that can activate TAK1 in vivo through phosphorylation of TAK1, a mitogen-activated protein kinase kinase kinase. Once activated TAK1 phosphorylates MAPK kinase MKK4 and MKK3/6, which activate p38 MAPK and JNK, respectively.

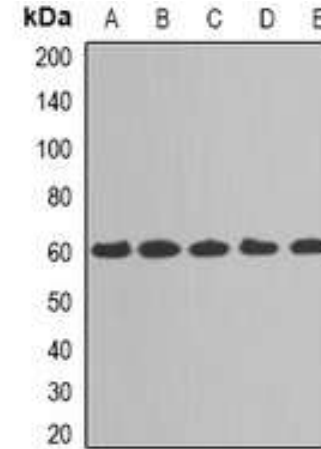
### SPECIFICITY:

Recognizes endogenous levels of TAB1 protein

### APPLICATION:

WB 1:500-1:2000

**Note:** This information is only intended as a guide. The optimal dilutions must be determined by the user.



Western blot analysis of TAB1 expression in MCF7 (A); A431 (B); HeLa (C); mouse kidney (D); mouse heart (E) whole cell lysates.

### RELATED PRODUCTS:

- PPAR gamma Antibody (Cat. No. 3809-100)
- DNMT1 Antibody (Cat. No. 3946-100)
- KLF4 Antibody (4G6E11) (Cat. No. 5300-100)
- NIF1 Antibody (Cat. No. 3737-100)

**FOR RESEARCH USE ONLY! Not to be used on humans.**