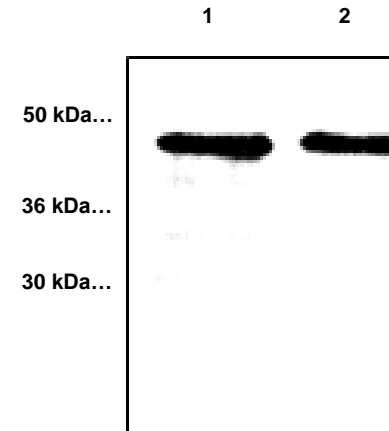


# Cyr61/CCN1 Polyclonal Antibody

<b>CATALOG #:</b>	3648-100
<b>AMOUNT:</b>	100 µg
<b>HOST:</b>	Rabbit
<b>IMMUNOGEN:</b>	Synthetic peptide surrounding amino acid 166 of mouse Cyr61 (ID# BV-314)
<b>SPECIES REACTIVITY:</b>	Human, Mouse, Rat
<b>FORMULATION:</b>	100 µg (0.5 mg/ml) affinity purified rabbit anti-Cyr61 polyclonal antibody in phosphate buffered saline (PBS), pH 7.2, containing 30% glycerol, 0.5% BSA, 5 mM EDTA and 0.03% proclin
<b>STORAGE CONDITIONS:</b>	Store at -20°C. For long-term storage, aliquot and freeze at -70°C. Avoid repeated freeze/defrost cycles.
<b>BACKGROUND:</b>	Cyr61 is a member of angiogenic and vasculogenic regulators designated CCN proteins, which includes CTGF, Cyr61 homolog, Fisp2. Cyr61 functions as an angiogenic inducer, stimulating cell adhesion and migration and promotes DNA synthesis of human vascular endothelial cells. Elevated expression of Cyr61 is observed during vessel growth, wound healing and chondrocyte differentiation.
<b>SPECIFICITY:</b>	The antibody detects the full length and cleaved form of Cyr61 protein from samples of human, mouse and rat origins. Cross-reactivity to other species has not been determined.
<b>APPLICATION AND USAGE:</b>	The antibody can be used for Western blotting (0.5-4 µg/ml) and Immunohistochemistry (5 µg/ml). However, the optimal conditions should be determined individually. Jurkat cell lysate (Cat.# 2401-100) and mouse small intestine tissue lysate (Cat.# 2601-100) can be used as positive controls. Blocking peptide (Cat.# 3468BP-50) is also available separately.



## Western blot with Cyr61 Polyclonal Antibody – Cat # 3648-100

- 1) 80 µg Jurkat cell lysate
- 2) 80 µg Mouse small Intestine tissue lysate

Blocking/Dilution buffer: 5% NFD (1 hr at RT) / TBST  
Lox-1 Polyclonal Antibody used at 1:1000 dilution - O/N at 4°C.  
Goat Anti-Rabbit IgG peroxidase conjugated used at 1:10,000 dilution – 1 hr at RT

Predicted band size: ~ 40 kDa.  
Observed band size: ~ 40 kDa.

## RELATED PRODUCTS:

- Cyr61 Antibody (Cat. No. 3648-100)
- Cyr61 Blocking Peptide (Cat. No. 3648BP-50)
- Cyr61/CCN1 Antibody (Clone 466305) (Cat. No. 6696-50)
- CYR61, Human Recombinant (Cat. No. 7131-100)

**FOR RESEARCH USE ONLY! Not to be used on humans.**