

Akt Polyclonal Antibody

CATALOG NO: 3247-30T 30 µg (Trial size)
 3247-100 100 µg

HOST: Rabbit

IMMUNOGEN: Synthetic peptide corresponding to residue surrounding amino acid 80 of human Akt (ID# BV-240).

SPECIES REACTIVITY: Human, Mouse, Rat, Bovine

FORMULATION:

0.5 mg/ml affinity purified rabbit anti-Akt polyclonal antibody in phosphate buffered saline (PBS), pH 7.2, containing 30% glycerol, 0.5% BSA, 5 mM EDTA and 0.03% proclin.

BACKGROUND:

Akt, also referred to as PKB and RAC, is the cellular homologue of the viral oncogene v-Akt. This protein kinase is activated by insulin and various growth factors and functions in a pathway involving PI3 kinase as activation is sensitive to wortmanin. Recent evidence suggests that Akt functions to promote cell survival by actively inhibiting apoptosis.

SPECIFICITY:

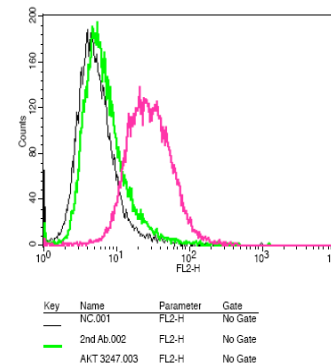
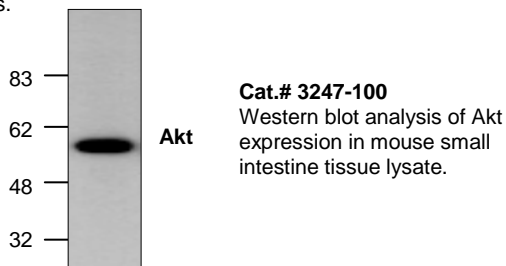
The antibody detects Akt1, Akt2 and Akt3. Blocking peptide (Cat.# 3247BP-50) is available separately.

APPLICATION AND USAGE:

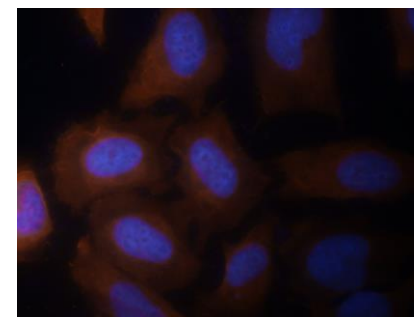
The antibody can be used for Western blotting (0.5-4 µg/ml). Mouse small intestine tissue lysate can be used as a positive control. Based on researchers feed back, the antibody also works well in immunoprecipitation (10-40 µg/ml), and immunohistochemistry (10-40 µg/ml). However, the optimal conditions should be determined individually.

STORAGE CONDITIONS:

Store at -20°C. For long-term storage, aliquot and freeze at -70°C. Avoid repeated freeze/thaw cycles.



FCM staining of HeLa cells using Akt Antibody



IFC staining of HeLa cells using Akt Antibody

RELATED PRODUCTS:

- Anti-Akt1 Rabbit Monoclonal Antibody (**Cat. No. A1117**)
- AKT1 Antibody (NT) (**Cat. No. 6745**)
- AKT1 Antibody (CT) (**Cat. No. 6744**)
- AKT1 (Thr308) Antibody (**Cat. No. 6742**)

FOR RESEARCH USE ONLY! Not to be used on humans.