

## Mcl-1 Polyclonal Antibody

**CATALOG NO:** 3035-30T 30 µg (Trial size)  
 3035-100 100 µg

**HOST:** Rabbit

**IMMUNOGEN:** Synthetic peptide corresponding to residues surrounding amino acid 131 of human Mcl-1 (ID# BV-438)

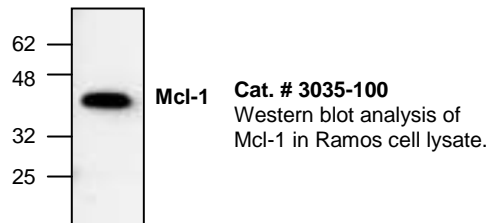
**SPECIES REACTIVITY:** Human, Mouse, Rat, Monkey, Rabbit, Porcine, Cat, Dog

**FORMULATION:**  
 0.2 mg/ml affinity purified rabbit anti-Mcl-1 polyclonal antibody in phosphate buffered saline (PBS), pH 7.2, containing 30% glycerol, 0.5% BSA, and 0.01% thimerosal.

**STORAGE CONDITIONS:**  
 Store at -20° C. For long term storage, aliquot and freeze at -70° C. Avoid repeated freeze/defrost cycles.

**BACKGROUND DESCRIPTION:**  
 Mcl-1 (Myeloid cell leukemia-1) is a 37 kDa Bcl-2-related protein with an apparent molecular weight of 43 kDa on SDS-PAGE. Mcl-1 was identified as an early-induction gene that increased in expression during the differentiation of human myeloblastic leukemia cell ML-1, or exposure to different DNA damaging agents. The level of Mcl-1 is decreased in peripheral B lymphocytes undergoing apoptosis following treatment with apoptotic stimuli such as TGF-β1 and forskolin. Expression of Mcl-1 is able to delay apoptosis induced by over-expression of c-myc in CHO 5AHSmyc cells. In hematopoietic FDC-P1 cells, Mcl-1 interacts with another Bcl-2-related protein, Bax, and prolongs cell viability after treatment with different apoptotic reagents.

**APPLICATION AND USAGE:**  
 The antibody can be used for Western blotting (0.5-4 µg/ml) and in Immunohistochemistry (5 µg/ml). Based on researcher's feedback, it also works well in Immunoprecipitation (10-20 µg/ml). However, the optimal conditions should be determined individually. Blocking peptide (Cat. # 3035BP-50) is available separately.



**FOR RESEARCH USE ONLY! Not to be used on humans.**

### RELATED PRODUCTS:

- Apoptosis Detection Kits & Reagents
  - Annexin V Kits & Bulk Reagents
  - Caspase Assay Kits & Reagents
  - Mitochondrial Apoptosis Kits & Reagents
  - Nuclear Apoptosis Kits & Reagents
  - Apoptosis Inducers and Set
  - Apoptosis siRNA Vectors
- Cell Fractionation System
  - Mitochondria/Cytosol Fractionation Kit
  - Nuclear/Cytosol Fractionation Kit
  - Membrane Protein Extraction Kit
  - Cytosol/Particulate Rapid Separation Kit
  - Mammalian Cell Extraction Kit
  - FractionPREP Fractionation System
- Cell Proliferation & Senescence
  - Quick Cell Proliferation Assay Kit
  - Senescence Detection Kit
  - High Throughput Apoptosis/Cell Viability Assay Kits
  - LDH-Cytotoxicity Assay Kit
  - Bioluminescence Cytotoxicity Assay Kit
  - Live/Dead Cell Staining Kit
- Cell Damage & Repair
  - HDAC Fluorometric & Colorimetric Assays & Drug Discovery Kits
  - HAT Colorimetric Assay Kit & Reagents
  - DNA Damage Quantification Kit
  - Glutathione & Nitric Oxide Fluorometric & Colorimetric Assay Kits
- Signal Transduction
  - cAMP & cGMP Assay Kits
  - Akt & JNK Activity Assay Kits
  - Beta-Secretase Activity Assay Kit
- Adipocyte & Lipid Transfer
  - Recombinant Adiponectin, Survivin, & Leptin
  - CETP Activity Assay & Drug Discovery Kits
  - PLTP Activity Assay & Drug Discovery Kits
  - Total Cholesterol Quantification Kit
- Molecular Biology & Reporter Assays
  - siRNA Vectors
  - Cloning Insert Quick Screening Kit
  - Mitochondrial & Genomic DNA Isolation Kits
  - 5 Minutes DNA Ligation Kit
  - 20 Minutes Gel Staining/Destaining Kit
  - β-Galactosidase Staining Kit & Luciferase Reporter Assay Kit
- Growth Factors and Cytokines
- Monoclonal and Polyclonal Antibodies