

Cytochrome c Antibody (Clone 7H8.2C12)

CATALOG NO: 3026-50
AMOUNT: 50 µg
HOST: Mouse
IMMUNOGEN: Pigeon cytochrome c
CLONE: 7H8.2C12
ISOTOPE: Mouse IgG_{2b}
PURIFICATION: Protein G affinity purified.

SPECIES REACTIVITY:

React with denatured human, mouse, and rat cytochrome c. The antibody does not bind native cytochrome c.

FORMULATION:

In PBS, pH 7.2 containing 50% glycerol and 0.09% sodium azide

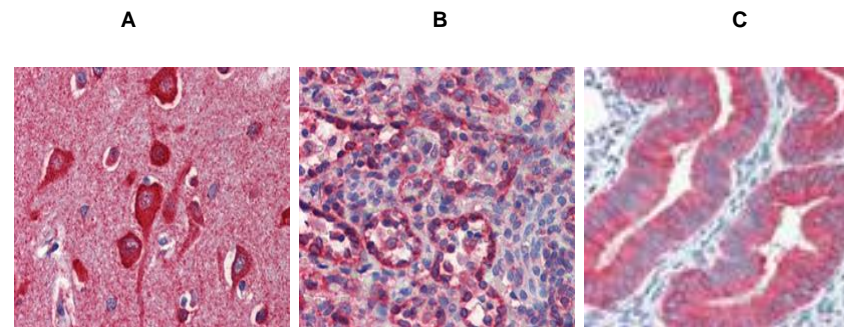
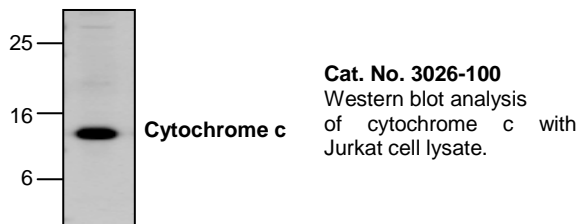
STORAGE CONDITIONS:

Store at -20°C. For long term storage, aliquot and refreeze at -20°C. Avoid repeated freeze/thaw cycles.

APPLICATIONS AND USAGE:

The antibody can be used in Western blot analysis (1:500). The antibody detects a ~14.0 kDa protein corresponding to the apparent molecular weight of cytochrome c.

Note: This information is only intended as a guide. The optimal dilutions must be determined by the user.



IHC Analysis: A) Human brain, cortex tissue B) Human spleen tissue C) Human uterus tissue stained with Cytochrome c, mAb (7H8.2C12) at 5µg/ml.

RELATED PRODUCTS:

- Cytochrome c Releasing Apoptosis Assay Kit (**Cat. No. K257**)
- Cytochrome c Antibody (**Cat. No. 3352**)
- Cytochrome c Antibody (**Cat. No. 3353**)
- Cytochrome c Antibody (**Cat. No. 3325**)
- Cytochrome c Blocking Peptide (**Cat. No. 3025BP**)
- Cytochrome c (**Cat. No. 2120**)

FOR RESEARCH USE ONLY! Not to be used on humans.