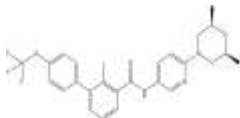


**PRODUCT: LDE-225**

**ALTERNATE NAME:** N-(6-((2R,6S)-2,6-dimethylmorpholino)pyridin-3-yl)-2-methyl-4'-(trifluoromethoxy)-[1,1'-biphenyl]-3-carboxamide; Sonidegib; Erimodegib; NVP-LDE225

**CATALOG #:** 2892-5, 25

**AMOUNT:** 5 mg, 25 mg

**STRUCTURE:**

**MOLECULAR FORMULA:** C<sub>26</sub>H<sub>26</sub>F<sub>3</sub>N<sub>3</sub>O<sub>3</sub>

**MOLECULAR WEIGHT:** 485.50

**CAS NUMBER:** 956697-53-3

**APPEARANCE:** Off-white solid

**SOLUBILITY:** DMSO (~ 5 mg/ml)

**PURITY:** ≥98% by HPLC

**STORAGE:** Store at -20 °C. Protect from air and light

**DESCRIPTION:** LDE225 is a potent and selective antagonist of Smoothed (Smo) with IC<sub>50</sub> values of 2.5 nM and 1.3 nM for human and mouse Hedgehog, respectively. LDE-225 induces dose-related inhibition of Hh and Smo-dependent tumor growth.

**REFERENCES:** D'Amato, C., *et al.* (2014). *Br. J. Cancer* 111, 1168-1179; Pan, S., *et al.* (2010). *ACS Med. Chem. Let.* 1, 130-134.

**HANDLING:** Do not take internally. Wear gloves and mask when handling the product! Avoid contact by all modes of exposure.

**RELATED PRODUCTS:**

BODIPY-Cyclopamine (Cat. No. 2160-50, 250)  
 CUR-61414 (Cat. No. 2743-5, 25)  
 Cyclopamine (Cat. No. 1578-5)  
 EZSolution™ Cyclopamine (Cat. No. 2545-5)  
 Cyclopamine-KAAD (Cat. No. 1910-50)  
 GANT58 (Cat. No. 1812-5, 25)  
 GANT61 (Cat. No. 1892-5)  
 GDC-0449 (Cat. No. 1890-5, 25)  
 EZSolution™ GDC-0449 (Cat. No. 2539-5)  
 Hh Signaling Pathway Antagonist (Cat. No. 1659-1)  
 DiscoveryPak™ hedgehog Signaling Pathway Antagonists Set (Cat. No. K868-6)  
 HPI-1 (Cat. No. 2410-5, 25)  
 Itraconazole (Cat. No. 1987-50, 100, 500, 1000)  
 Jervine (Cat. No. 2357-1, 5)  
 JK-184 (Cat. No. 1726-1)  
 Purmorphamine (Cat. No. 1672-5)  
 Robotnikinin (Cat. No. 1923-1)  
 SANT-1 (Cat. No. 1978-1,5)  
 SANT-2 (Cat. No. 1976-1, 5)  
 Smo Antagonist, SA1 (Cat. No. 2154)  
 Smo Antagonist, SA9 (Cat. No. 2155)  
 Smo Antagonist, SA10 (Cat. No. 2159)  
 Sonic Hedgehog, human recombinant (Cat. No. 4010-25, 100, 1000)  
 Sonic Hedgehog, murine recombinant (Cat. No. 4020-25, 100, 1000)  
 Tomatidine hydrochloride (Cat. No. 1893-25)

**USAGE:** **FOR RESEARCH CH USE ONLY! Not to be used in humans**